

**A fashionable
combination
of fabric and
chains**

Scarf Necklace

Get the best of both worlds with this accessory and jewelry combo. Although similar designer scarf necklaces sell for hundreds of dollars, it's quick to make one (less than an hour) in only a few easy steps. Create a simple pattern, sew the scarf with one seam, add a snap closure, and finish it with chain embellishments to give it the necklace look.

Only $\frac{1}{2}$ yard of fabric is used, so splurge on something fabulous. And since it is so quick to put together, you can make one for every outfit and one for every friend.

ANNIE O'CONNOR is a Threads Assistant Editor.

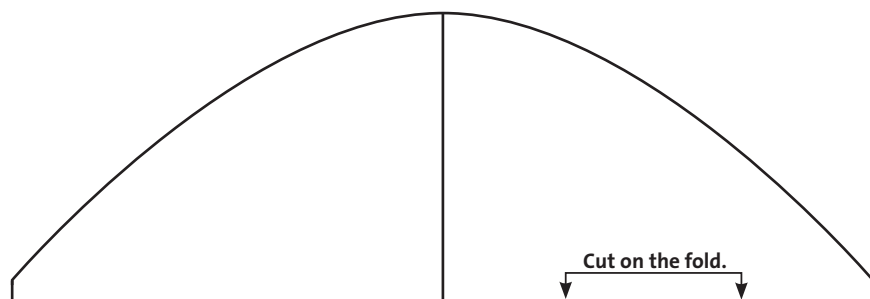
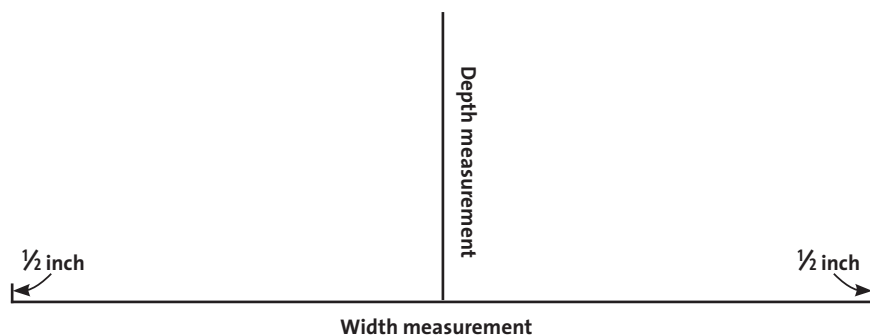


Draft the pattern

Create the scarf necklace from a simple pattern you make yourself.

{1} MEASURE THE WIDTH. Loosely place a measuring tape around your neck to determine your desired scarf necklace circumference. Add 4 inches, 1 inch for seam allowances and 3 inches for extra fullness. The scarves shown are 24 inches wide.

{2} MEASURE THE DEPTH. Measure down from your collarbone to the desired depth of the scarf. Do not exceed 12 inches. Add 1 inch for seam allowances. The scarves shown are 8 inches deep.



Supplies

- $\frac{1}{2}$ yard lightweight fabric
- 2 to 3 yards jewelry chains
- $\frac{3}{4}$ -inch snap
- Curved ruler
- Measuring tape
- Pattern paper
- Pencil
- Pins
- Scissors
- Sewing machine
- Thread
- Wire cutter

Optional:

- Ribbon

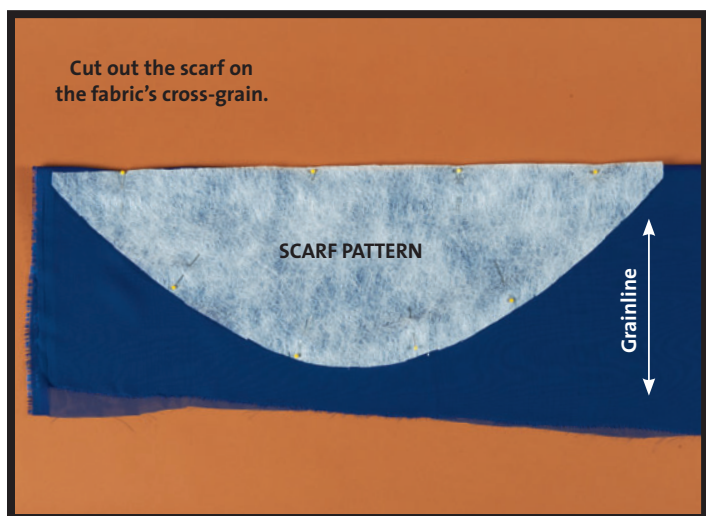
{3} MARK THE WIDTH. On pattern paper, mark a straight line the measurement determined in step 1. Place a mark at each end of the measurement. At each mark, draw a $\frac{1}{2}$ -inch line perpendicular to the first line.

{4} MARK THE DEPTH. Determine the center between the marks, and draw a vertical line the depth you measured in step 2.

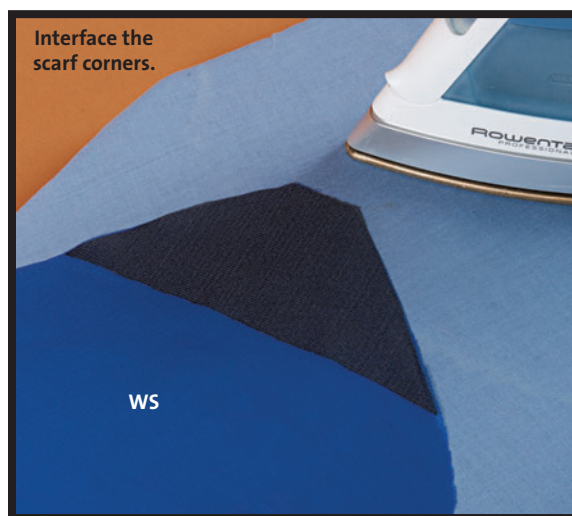
{5} DRAW THE CURVED LINE. Using a curved ruler as a guide, connect the two lines. Cut the pattern along the new curved line and the straight bottom line. Add the marking "cut on the fold" along the lower straight edge.

Sew the scarf

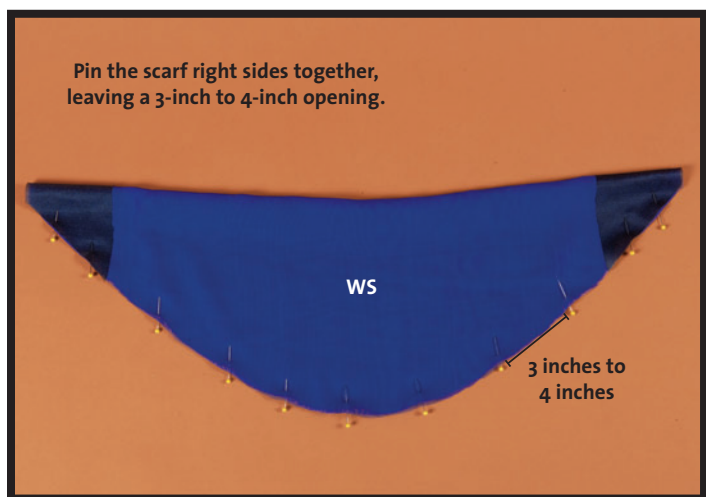
With just one seam and a closure, you've got a fashionable accessory.



{1} CUT OUT THE SCARF. Fold the fabric along the cross-grain. Place the pattern's straight edge along the fold, and cut out the scarf.



{2} REINFORCE THE NARROW CORNERS. Fuse a lightweight interfacing piece, the shape of the corner and 3 inches long, to the wrong side of each end.



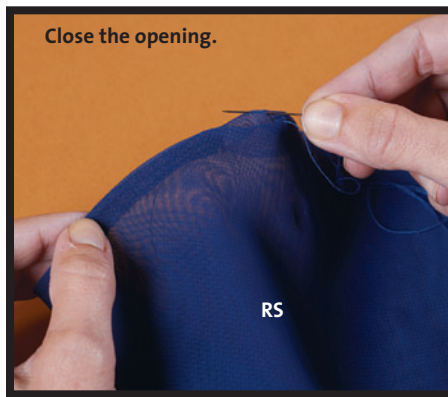
{3} PIN THE SCARF. Fold the scarf right sides together, with the long, curved edges aligned. Pin the edges, leaving a 3-inch to 4-inch opening along the curve a few inches from one of the narrow ends.



{4} SEW ALONG THE CURVE. Using a ½-inch seam allowance, start with the needle along the fold on one side of the curve, and stitch to the marked area for the opening. Start sewing again after the opening, and finish at the fold on the other edge.



{5} SEW A SECOND ROW OF STITCHING. Stitch the curve again using a $\frac{3}{8}$ -inch seam allowance. Trim the remaining seam allowance along the second row of stitching.



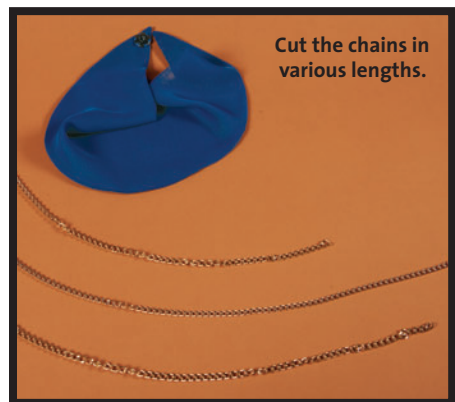
{6} TURN THE SCARF RIGHT SIDE OUT. Fold the opening seam allowances between the scarf layers. Press the seam. Slipstitch the opening closed.



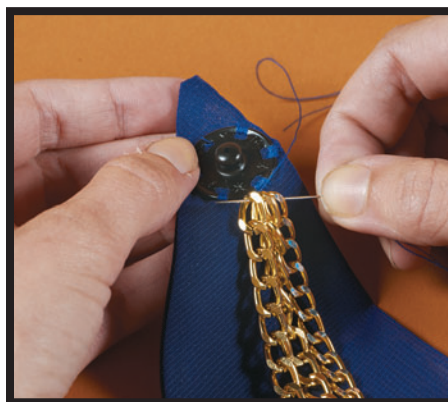
{7} ATTACH A CLOSURE. Hand-sew a large snap to the narrow ends of the scarf. Or, for a tie closure, machine-tack 12-inch-long ribbons to each narrow end.

Embellish with chains

Add a few simple decorations and you've created a unique necklace.



{1} CUT DECORATIVE CHAINS. Using a wire cutter, cut the chains to various lengths, approximately 20 inches to 30 inches long. Try on the scarf, and pin the chains to it to determine the desired lengths.



{2} TACK THE CHAINS. Start with the needle just below the snap location. Hand-sew the chains to the scarf, knotting the thread between each stitch. Finish and create the end knot behind the chains.



{3} ADD OPTIONAL INTEREST. If desired, make decorative knots in the chains. Plan for this before cutting the chains, as you will need longer lengths.

Two-sided scarf

By adding one extra seam, you can line the scarf with a different fabric. This is perfect if the face fabric has dimensional or itchy embellishments, such as beads or sequins. It also enables you to make a reversible scarf, so you get two accessories in one.

When creating the pattern, add a $\frac{1}{2}$ -inch seam allowance along the straight edge. Cut one each of the face and lining fabrics, not on the fold. When sewing, stitch the long, straight seam first, and then follow the rest of the instructions as usual.

