

London Dog

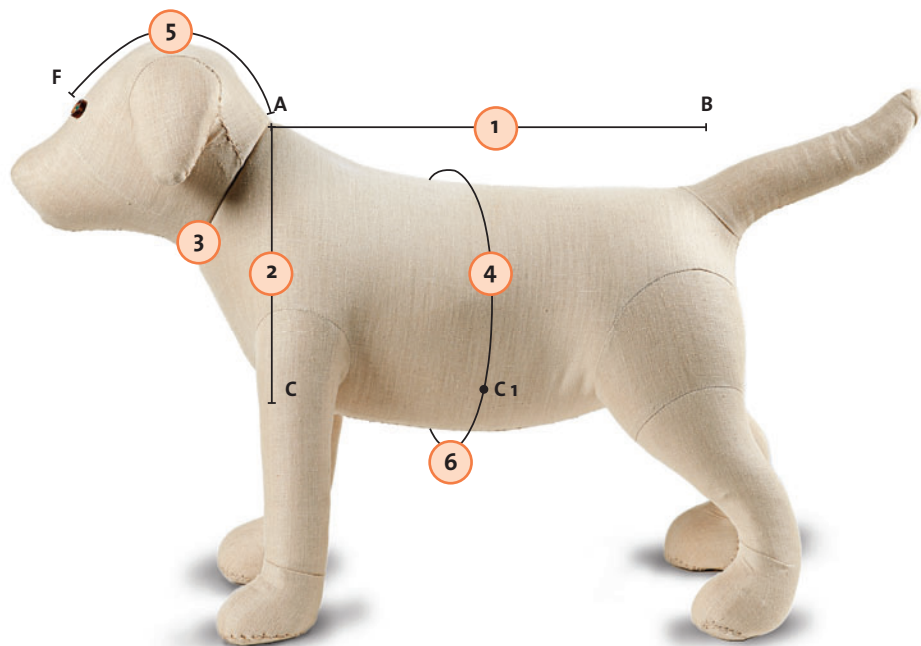
**Stitch up a
raincoat for your
canine friend**

Most dogs don't love the rain, but they all have to go outside sometime. So even if he doesn't live in a rainy climate, do your four-legged friend a favor and make him a raincoat. This coat is complete with a hood and a pocket for a mid-walk snack or his cell phone.

JUDITH NEUKAM is Threads' senior technical editor.

How does Bowser measure up?

Take a few measurements so you can adjust the pattern to fit properly.



Supplies

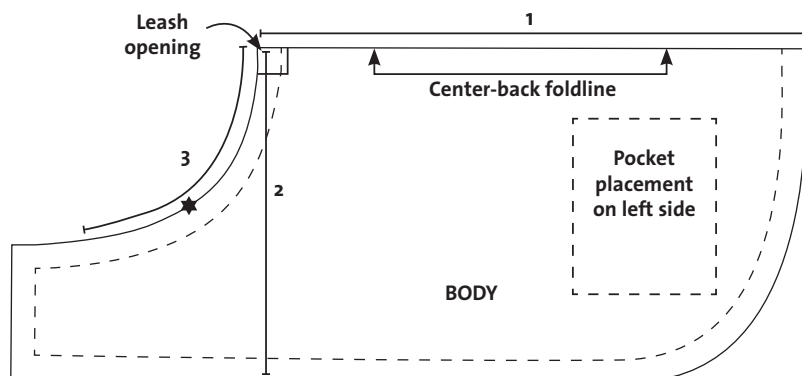
- Fabric, see no. 7, below, for amount
 - > Outer fabric
 - > Coordinating lining
 - > Flannel inner lining
- 1 yard cord for hood
- Six buttons
- Fusible tape
- Matching thread
- Waterproofing spray

1. A to B—neck to base of tail.
2. A to C—Center-back neck to top of front leg.
3. Neck circumference (from A around center front and back to A).
4. Around the body's widest part.
5. From A to F for the hood.
6. Measure between C1, the width of the underbelly.
7. Measure your dog from the tip of his nose to the base of his tail, and buy that much of each fabric.

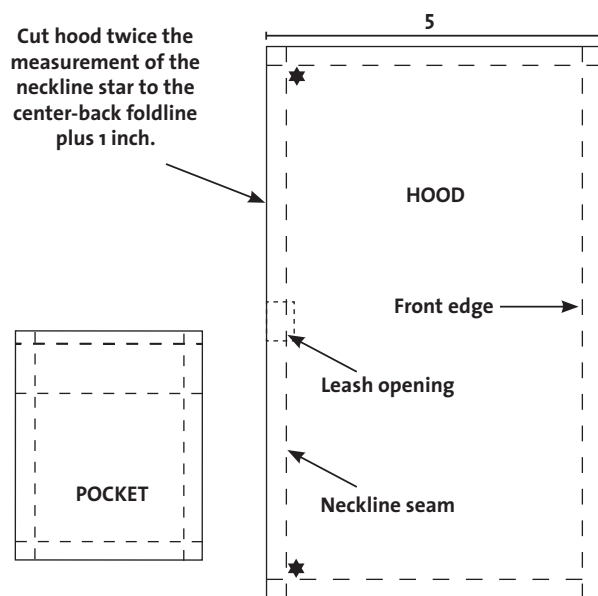
Customize the coat pattern

Enlarge the pattern below to fit your dog. This pattern is scaled to a medium-size dog. It can be enlarged on a copier, then fine-tuned for your pet by cutting along the center back and a line perpendicular to it and expanding or contracting the length and width to fit. Cut and adjust a paper pattern to correspond to the measurements you took above.

CUT THE FABRIC. For the body and hood, cut one each of outer fabric, contrasting lining, and flannel interlining. Cut the belt and pocket in a single layer from the outer fabric.



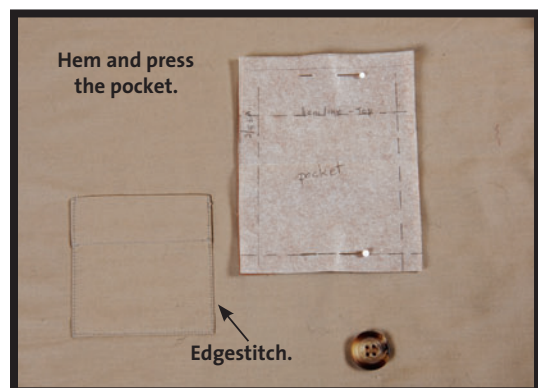
Cut hood twice the measurement of the neckline star to the center-back foldline plus 1 inch.



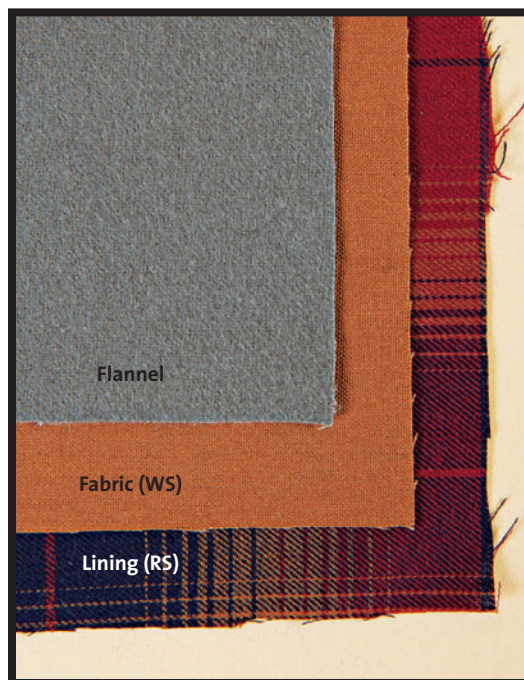
Put the pieces together

Apply the pocket to the outer layer, then layer the coat fabrics, right sides together, before stitching the raincoat. For snazzy contrast, reverse the lining and outer fabric on the hood portion.

The body



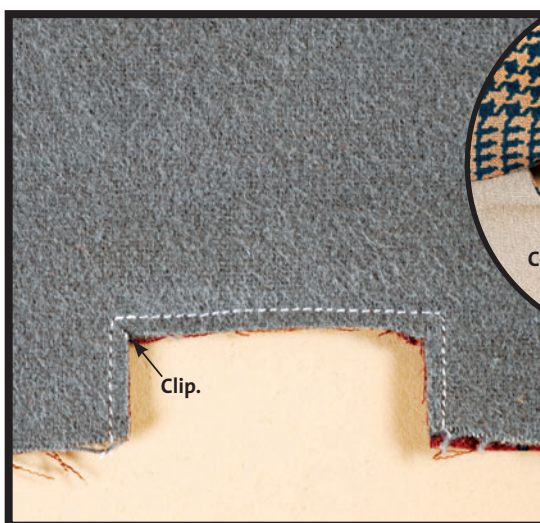
{1} LAY THE OUTER FABRIC ON TOP OF THE FLANNEL LAYER WITH RIGHT SIDES UP. Pin the edges to secure. Prepare the pocket by hemming the top and pressing the edges under. Then edgestitch it to the outer fabric/flannel unit where marked.



{2} POSITION THE OUTER AND LINING FABRICS RIGHT SIDES TOGETHER. Top with the flannel and align edges and sew around the coat body, using a 1/2-inch-wide seam allowance. Leave the neckline open between the stars to attach the hood.



{3} TRIM THE FLANNEL CLOSE TO THE STITCHING. Then trim the remaining seam allowances to 1/8-inch wide. Don't trim anything between the stars at the neckline.

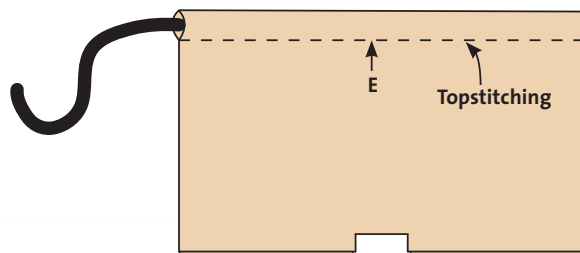
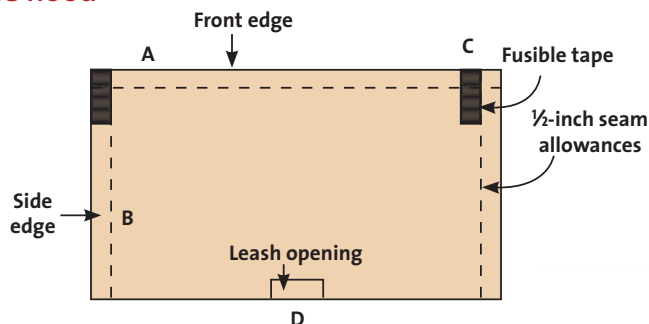


{4} SEW A RECTANGULAR SHAPE 1 1/2 INCHES LONG AND 3/8 INCH DEEP AT THE CENTER-BACK NECKLINE EDGE. Use a 1.5-mm-long straight stitch. Trim close to the stitching, and clip into the corners. This lets you access the dog's collar with the leash.

{5} TURN THE BODY RIGHT SIDE OUT AND PRESS.

Add buttonholes and buttons or hook and loop tape to the front closure. The open rectangle matches the one on the hood and finishes so that the leash can hook the collar.

The hood



{1} LAYER THE THREE FABRICS (as in “The body”). Stitch the front edge (A), back-tacking at each end.

{2} NEXT, STITCH THE SIDE EDGES. Start 1/2 inch from the previous seam (B), and back-tack as before.

{3} TRIM THE SEAM ALLOWANCES AS BEFORE. Don’t trim the 1/2-inch section you didn’t sew. Fold these seam allowances to the wrong sides, respectively, and fuse in place (C).

{4} SEW AND TRIM/CLIP THE RECTANGLE AT THE CENTER BACK (D). This is the same as on the body in step 4 on the facing page.

{5} TURN THE HOOD RIGHT SIDE OUT. Press, and then topstitch 1/2 inch from the face edge (E). Insert a cord or shoestring in this channel the appropriate length for your dog’s head to keep his hood in place.



Make the belt long enough to fit around the dog. Sew buttons on one side and buttonholes on the other.

Topstitch one belt end inside the coat.

{6} ATTACH THE HOOD. Position the hood on the body neckline, align the edges between the stars, and stitch through all fabrics except the coat lining. Trim the seam allowances, and turn them inside the body. Turn the lining seam allowance under and hand- or machine-stitch the neckline closed.

{7} MAKE A BELT. Sew a pointed strip from the outer fabric 1 1/2 inches wide and long enough to reach from side to side under Bowser’s tummy and button on one side. Topstitch one end inside the coat. Add buttonholes and buttons. Spray the coat with a water repellent spray (such as Aqua Armor), and let it dry before putting it on the dog.

