

Enlarge a Pattern

Here's a no-fail way to enlarge any pattern, from small magazine templates to your own half-scale designs. Enlarging by photocopying can be complicated, because the enlarged pattern may exceed the paper size. It also increases the width of the pattern lines, throwing off sizing.

Find the Multiplier

First, turn the miniature pattern into a usable size by enlarging it enough to fill one 8½ x 11 sheet of paper.

Next, select one line on the miniature pattern with a given length. The directions or a scale bar on the pattern tells

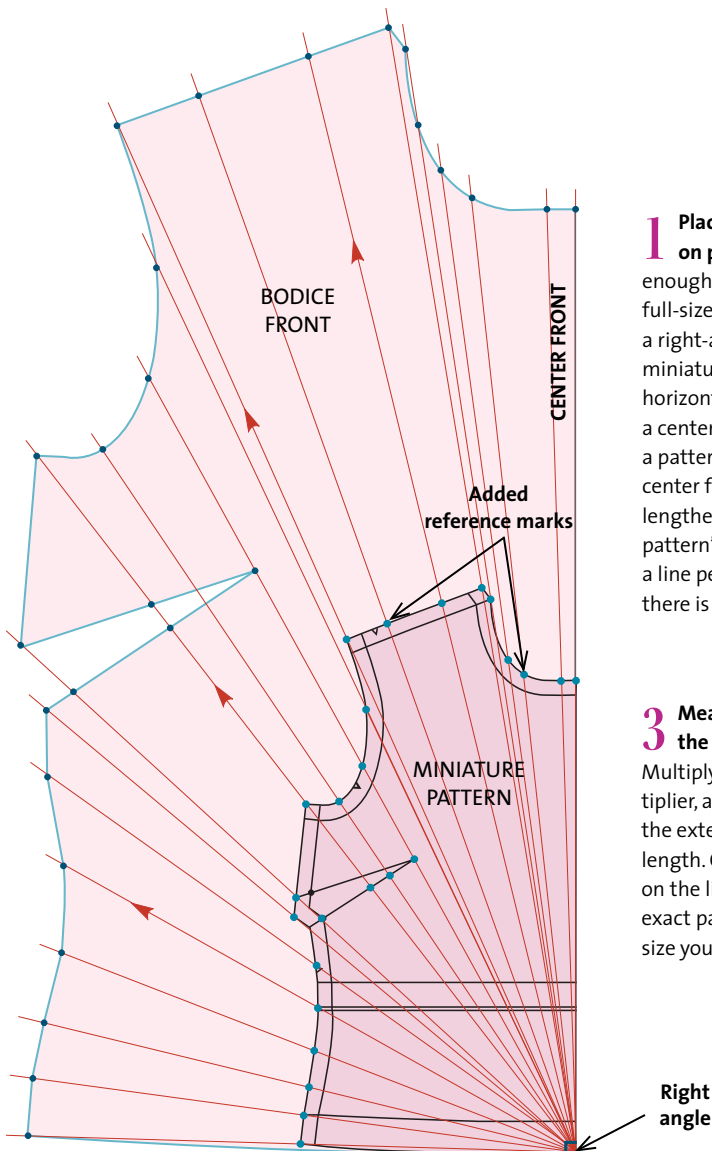
you that line's full-scale length.

Measure the miniature line's length. Divide the full-size length by the miniature line's length. For our purposes, call the result the multiplier. Multiply this number times the miniature line's length to de-

termine the correct enlarged length. The same multiplier will work for all the lines in one pattern.

Full size ÷ Miniature size = Multiplier
Multiplier x Miniature size = Full size

Change the Pattern Scale



1 Place the miniature pattern on paper. Use a sheet large enough to accommodate the full-size pattern. Find or create a right-angle reference on the miniature pattern, where a horizontal line intersects either a center line or the grainline. If a pattern piece doesn't have a center front, such as a sleeve, lengthen the grainline past the pattern's lower edge and draw a line perpendicular to it. If there is no grainline, draw one.

3 Measure the distance from the angle to each point. Multiply each distance by the multiplier, and mark new points and the extended lines at the full-size length. Connect the points marked on the lines, and you'll have an exact pattern copy enlarged to the size you need.

2 Follow the illustration at left. Dot reference points along the pattern's edges or key stitch lines and landmarks. Add reference marks as needed to help copy curved sections. Draw radiating lines from the right-angle reference through each pattern reference point.

