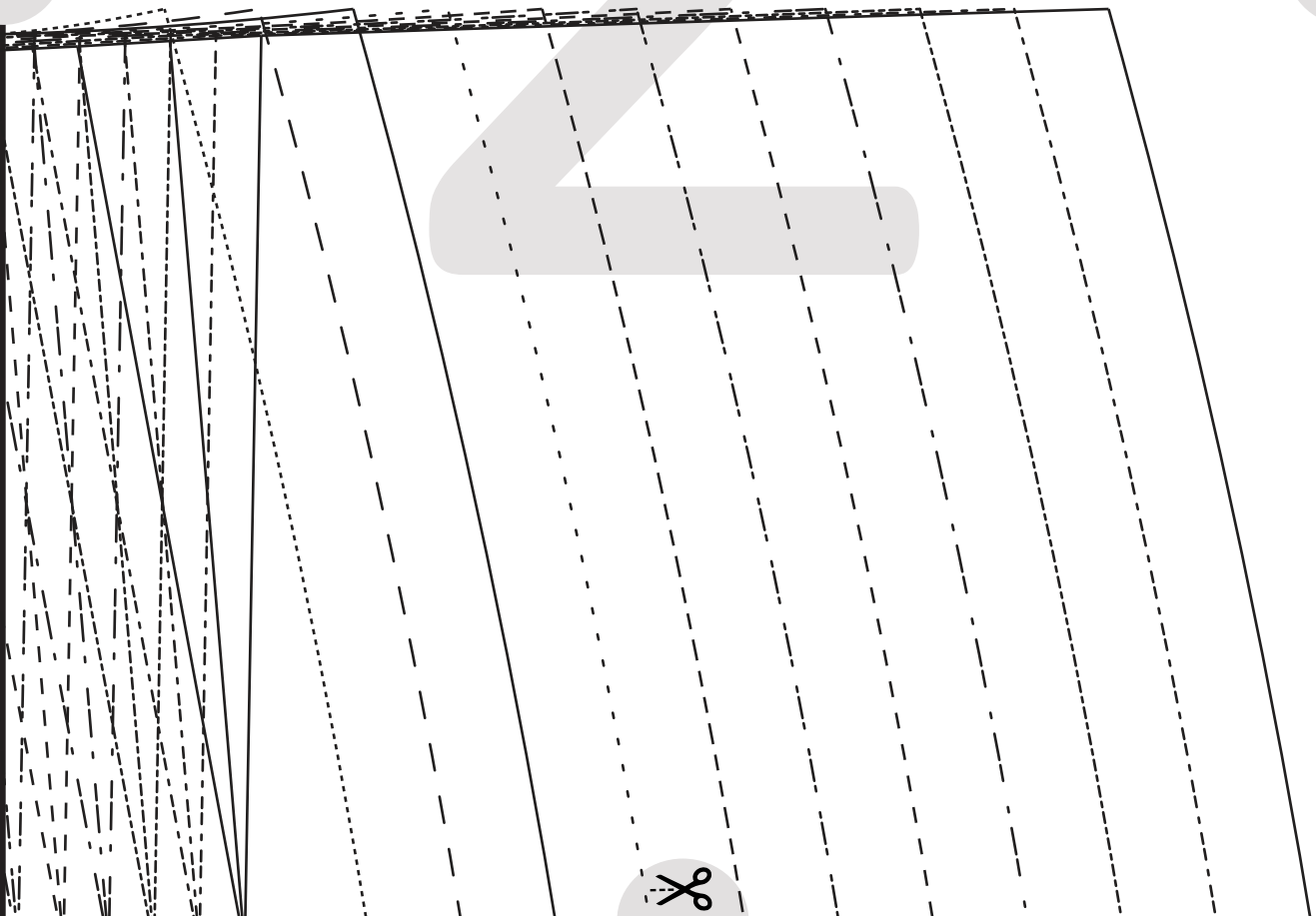
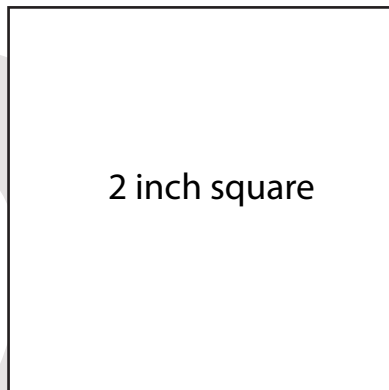
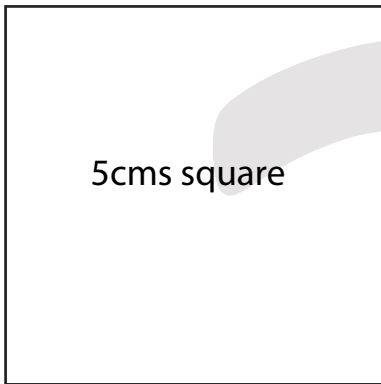


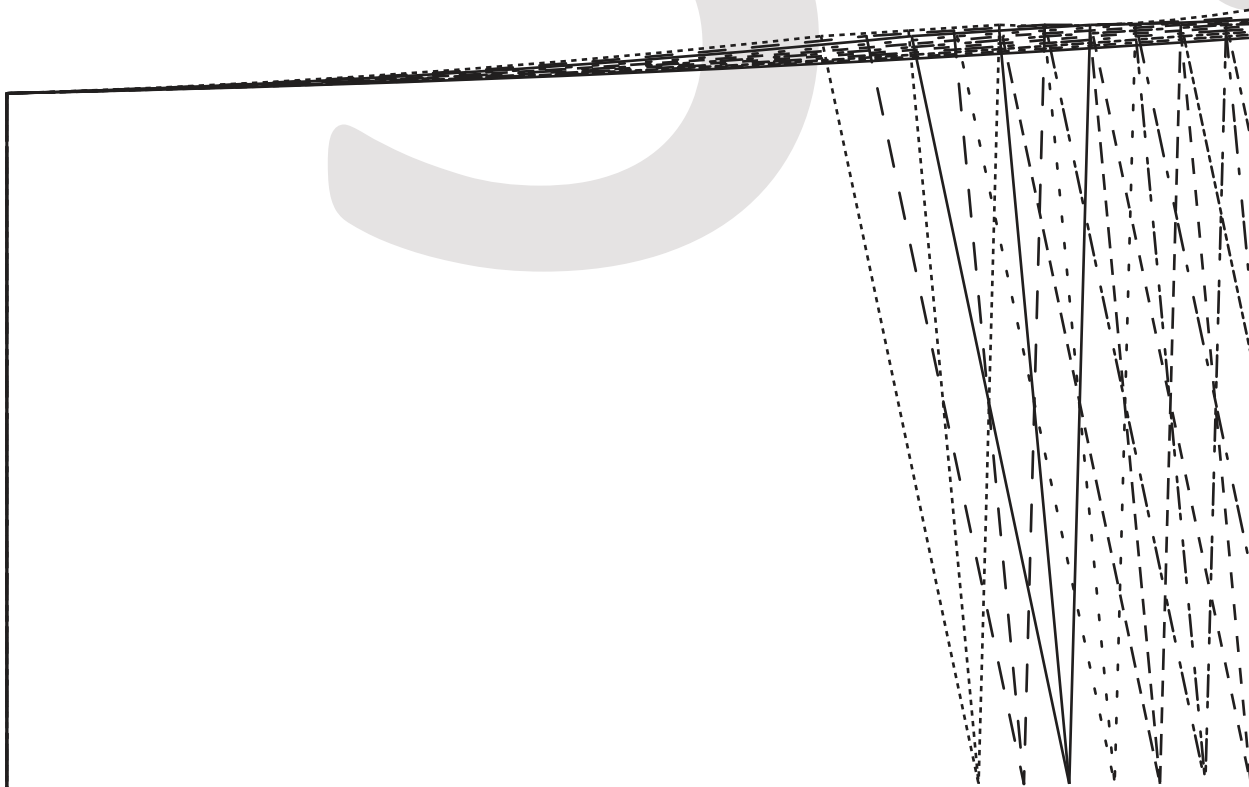
# Designer Stitch



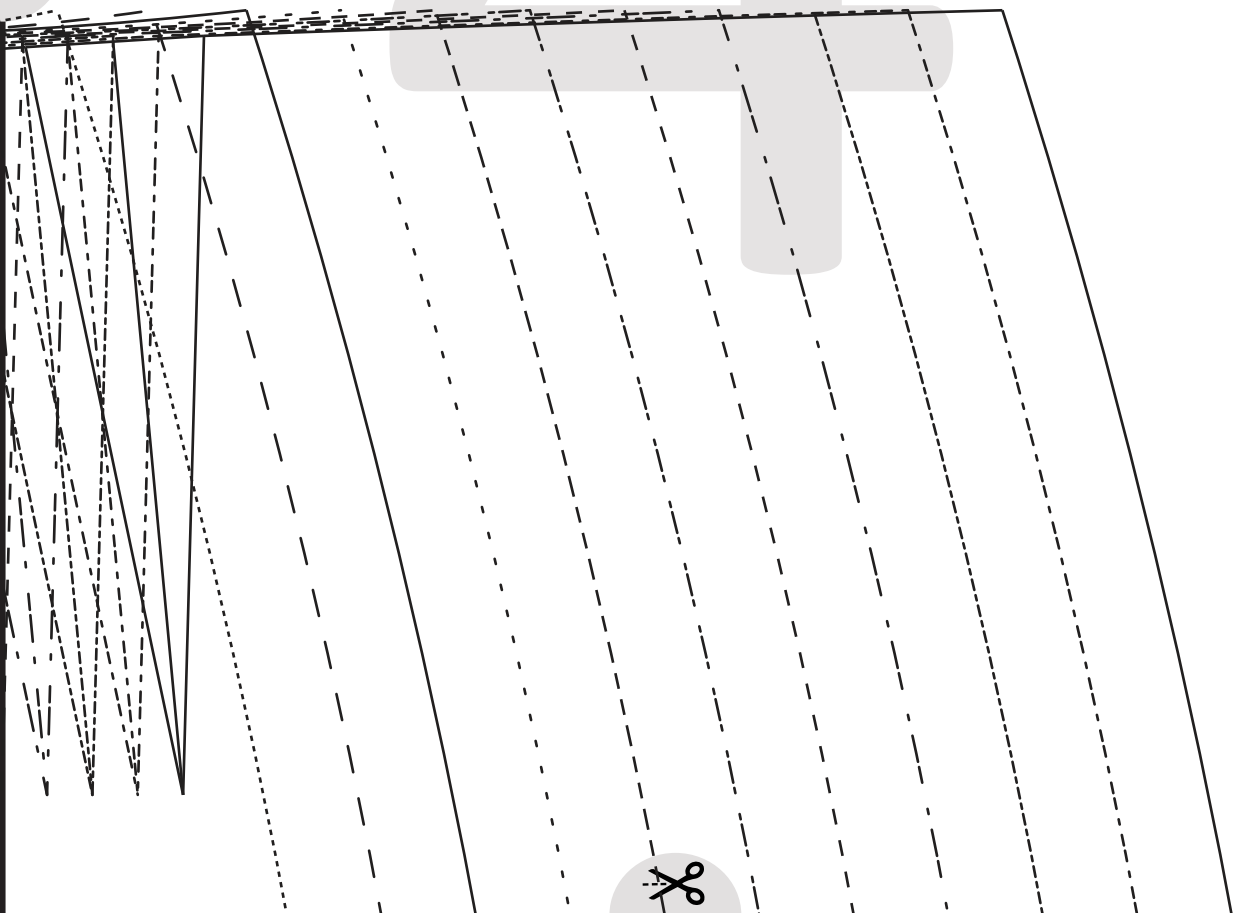
©2016 by Designer Stitch Patterns.  
All rights reserved. No part of this document  
may be reproduced or transmitted in any  
form, or by any means, electronic,  
mechanical, photocopying, recording, or  
otherwise, without prior permission from  
Designer Stitch Patterns.



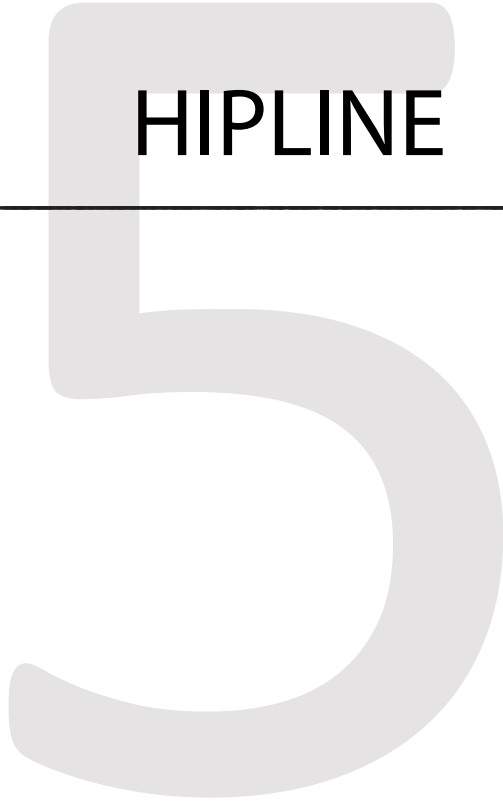
<b>PATTERN SIZE</b>	<b>1</b>	<b>2</b>	<b>3</b>	<b>4</b>	<b>5</b>
equivalent to :					
US	2	4	6	8	10
AUSTRALIAN/ UK	6	8	10	12	14
EU	34	36	38	40	42
Bust	80cm (32")	85cm (34")	90cms (36")	95cms (38")	100cm (40")
Natural Waist	60cms (23½")	65cms (25½")	70cms (27½")	75cms (29½")	80cms (31½")
Full Hip (20cms below waist)	86cms (34")	91cms (36")	96cms (38")	101cm (40")	106cm (42")



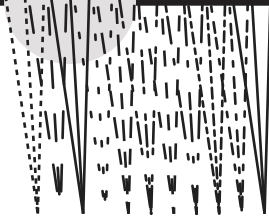
<b>6</b>	<b>7</b>	<b>8</b>	<b>9</b>	<b>10</b>	<b>11</b>
12	14	16	18	20	22
16	18	20	22	24	26
44	46	48	50	52	54
105cm (42")	110cm (44")	115cm (46")	120cm (48")	125cm (50")	130cm (52")
85cms (33½")	90cms (35½")	95cms (37½")	100cm (39½")	105cm (41½")	110cm (43½")
111cm (44")	116cm (46")	121cm (48")	126cm (50")	131cm (52")	136cm (54")

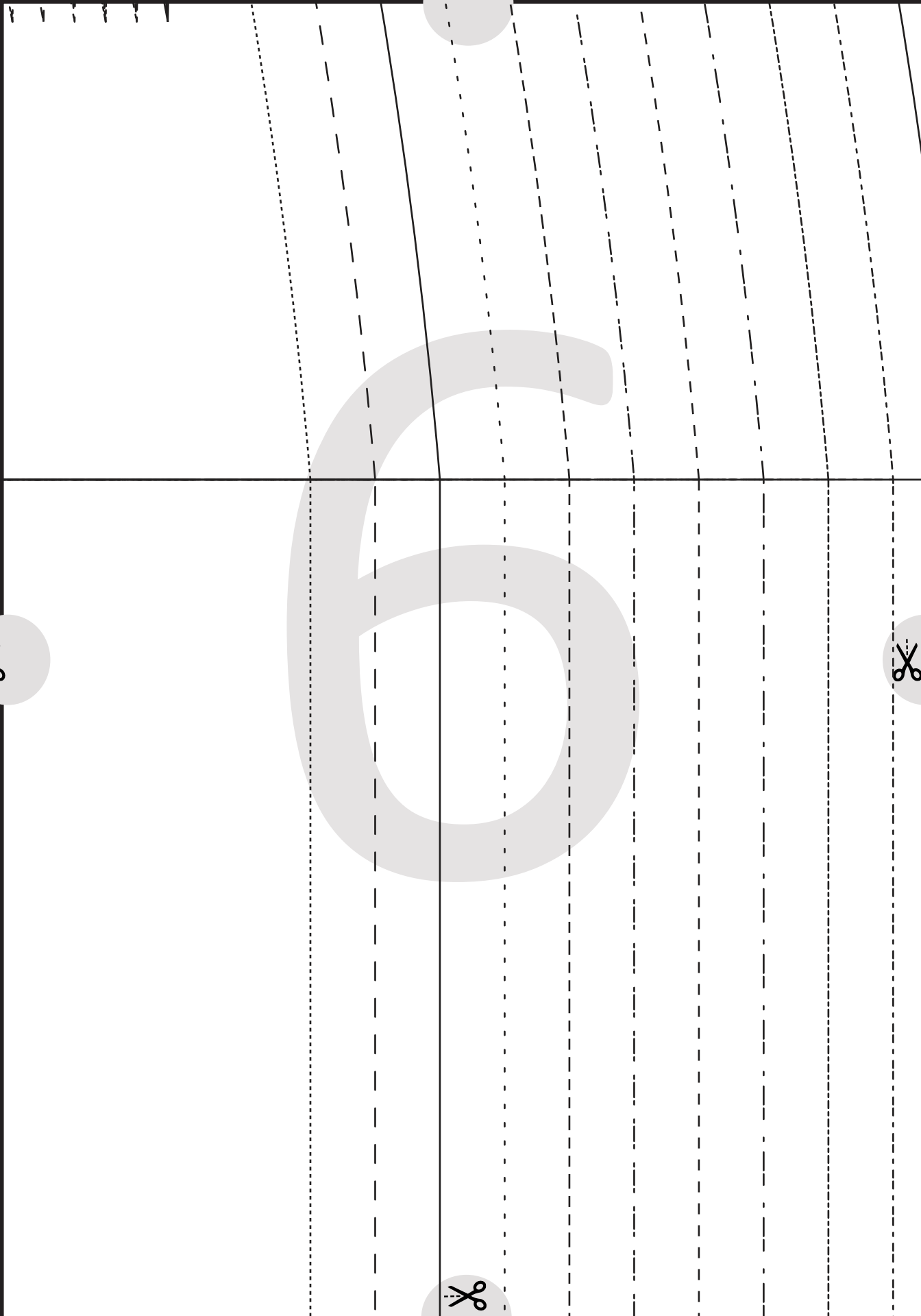


CENTRE BACK



HIPLINE

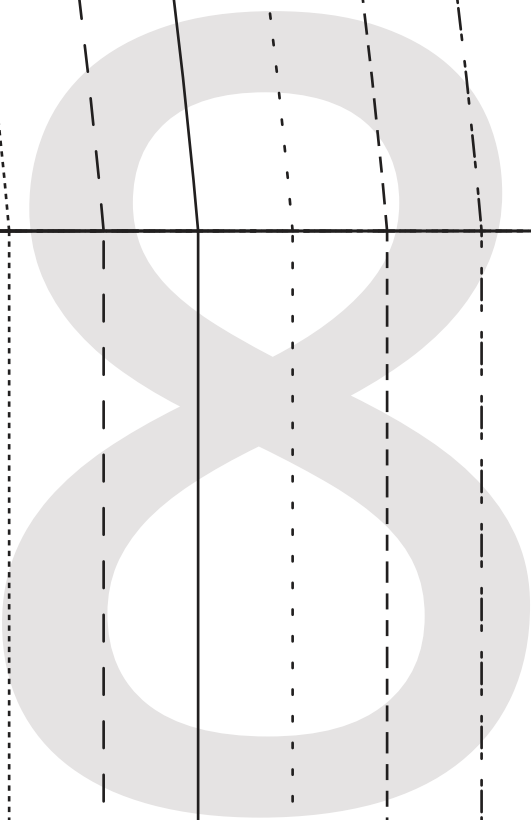




CENTRE FRONT

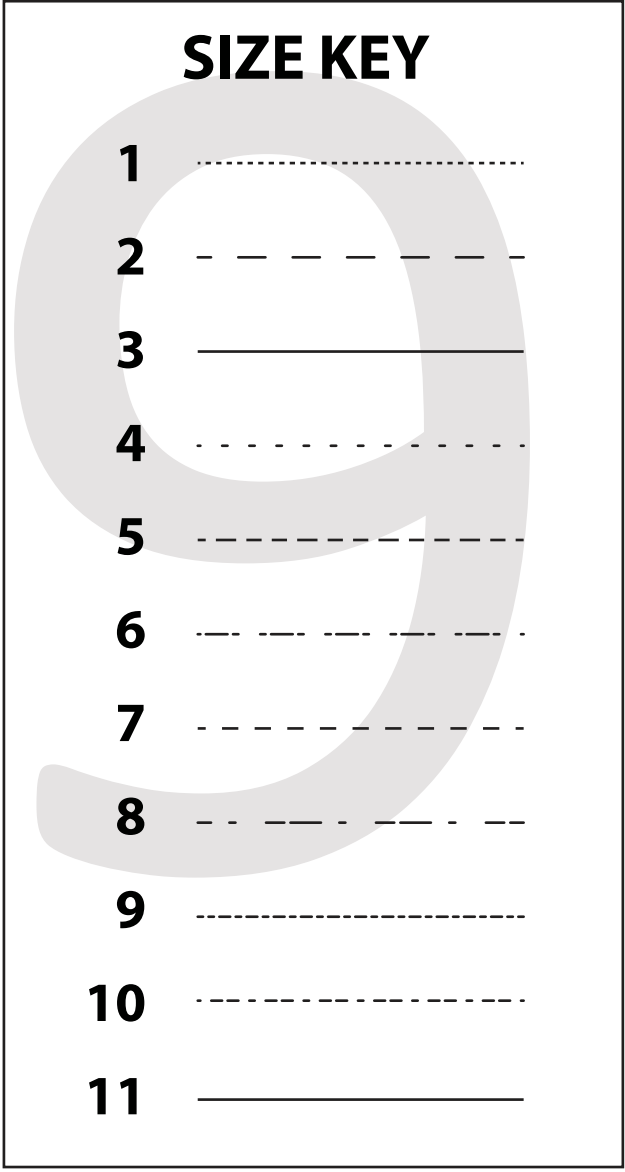
HIPLINE







# SIZE KEY



1

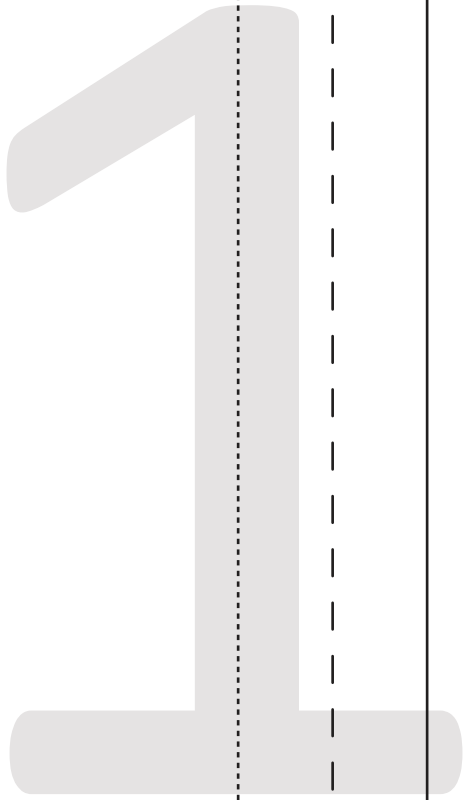
0



1

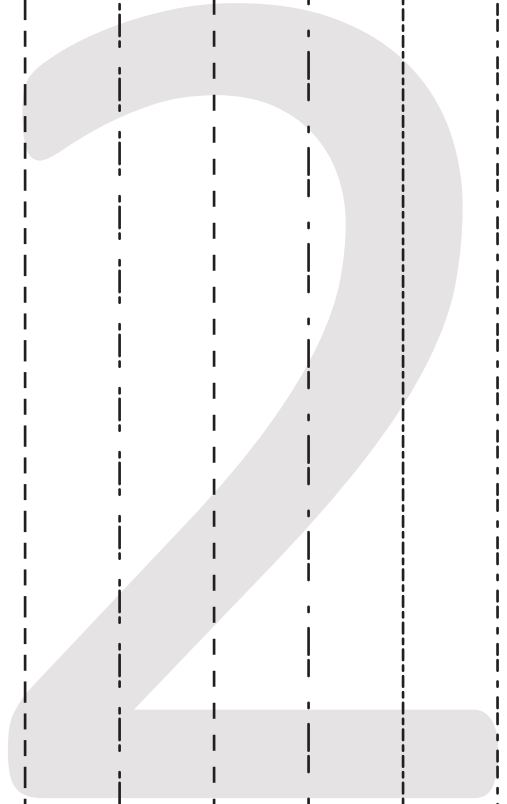
1





1

A large, light grey number '1' is positioned on a set of handwriting lines. The lines consist of a solid top line, a dashed middle line, and a solid bottom line. The number '1' starts at the top line, goes down to the bottom line, and has a short horizontal stroke at the top left. A grey circle is partially visible on the left edge of the page.



2

A large, light grey number '2' is positioned on a set of handwriting lines. The lines consist of a solid top line, a dashed middle line, and a solid bottom line. The number '2' starts at the top line, curves over to the right, then goes down to the bottom line, and has a horizontal stroke at the bottom. A grey circle is partially visible at the top center of the page.