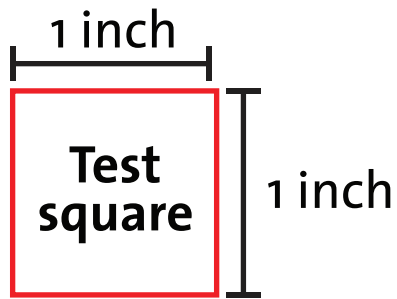


threads



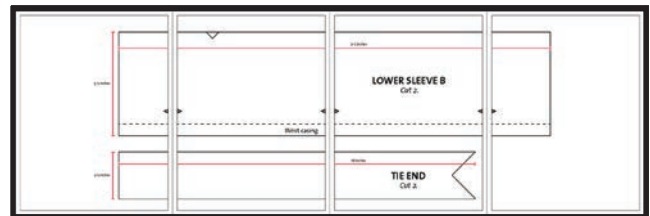
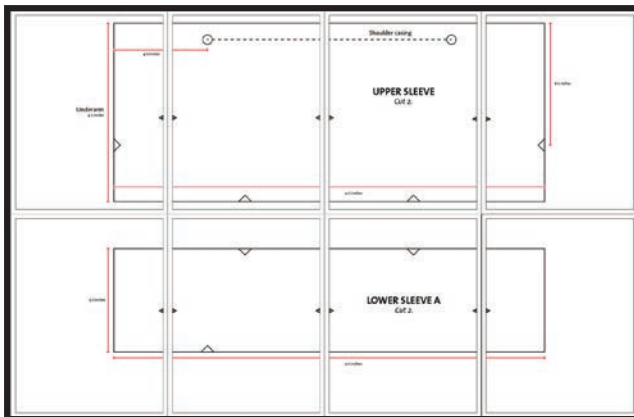
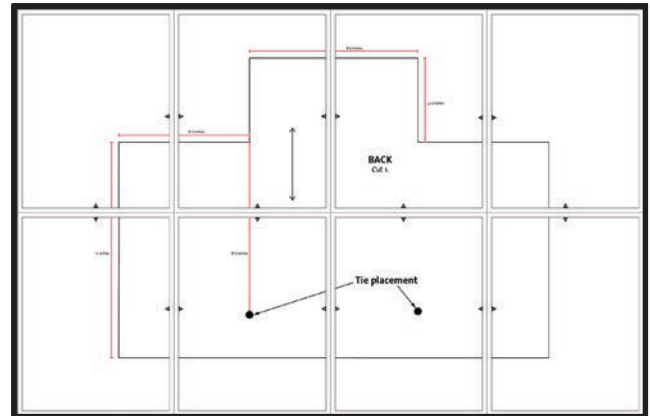
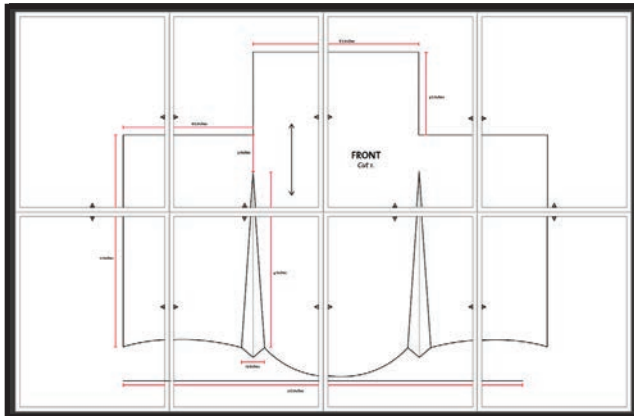
Vintage Linens: Blouse Pattern

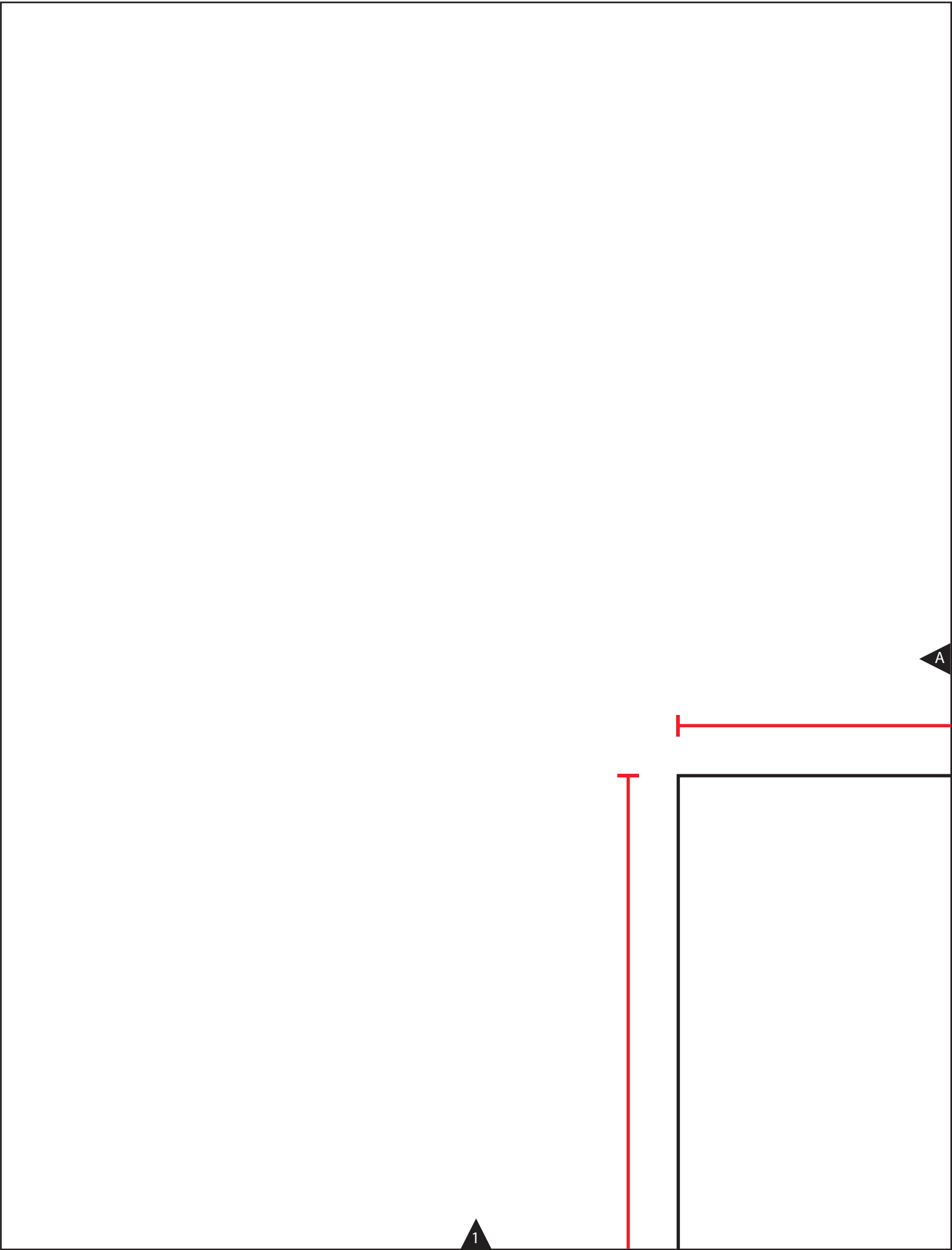
By Joan McGowan-Michael

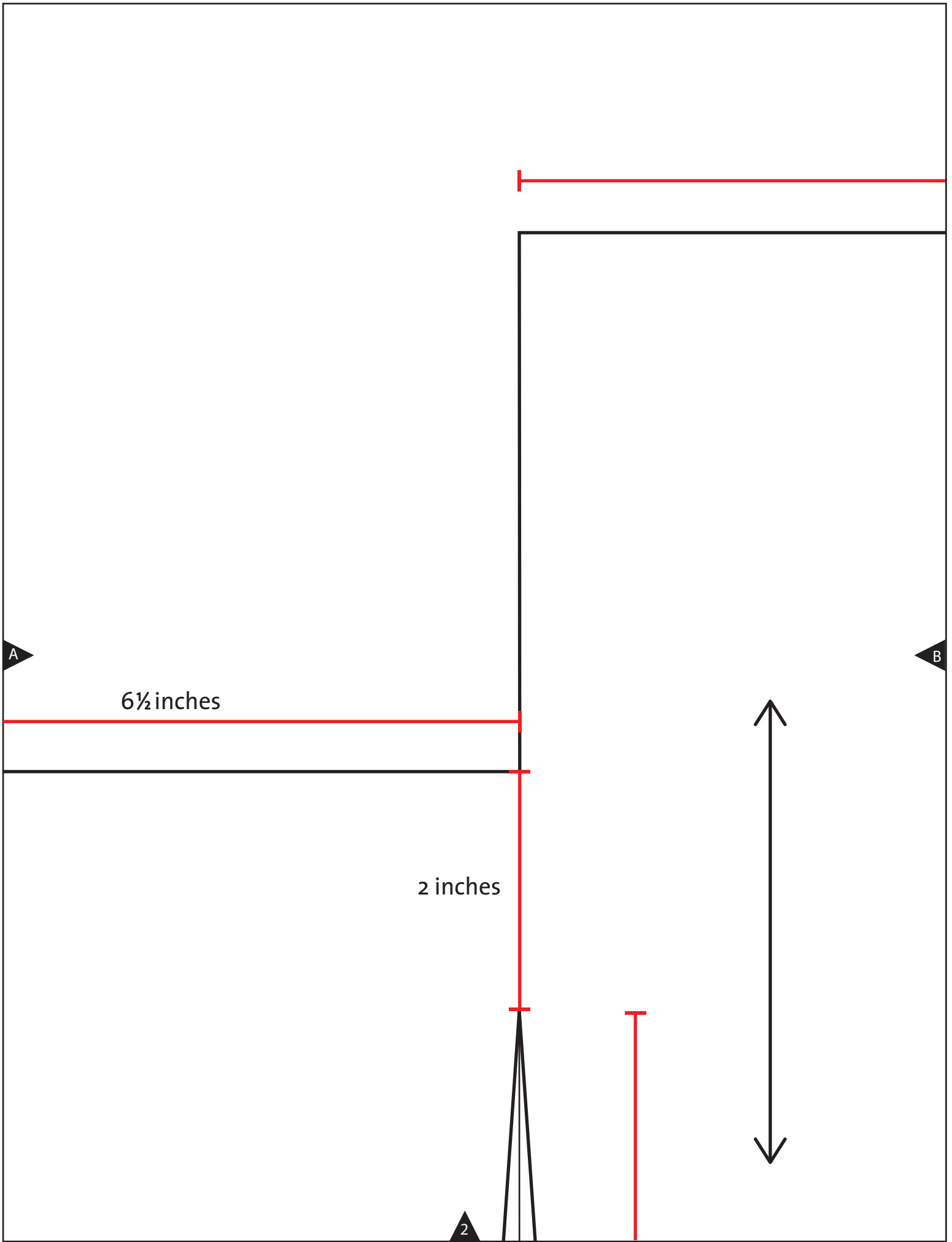
Size Medium (38-inch to 40-inch bust)

½-inch-wide seam allowances included

1¼ yards of ½-inch-wide elastic cut to length







8½ inches

4½ inches

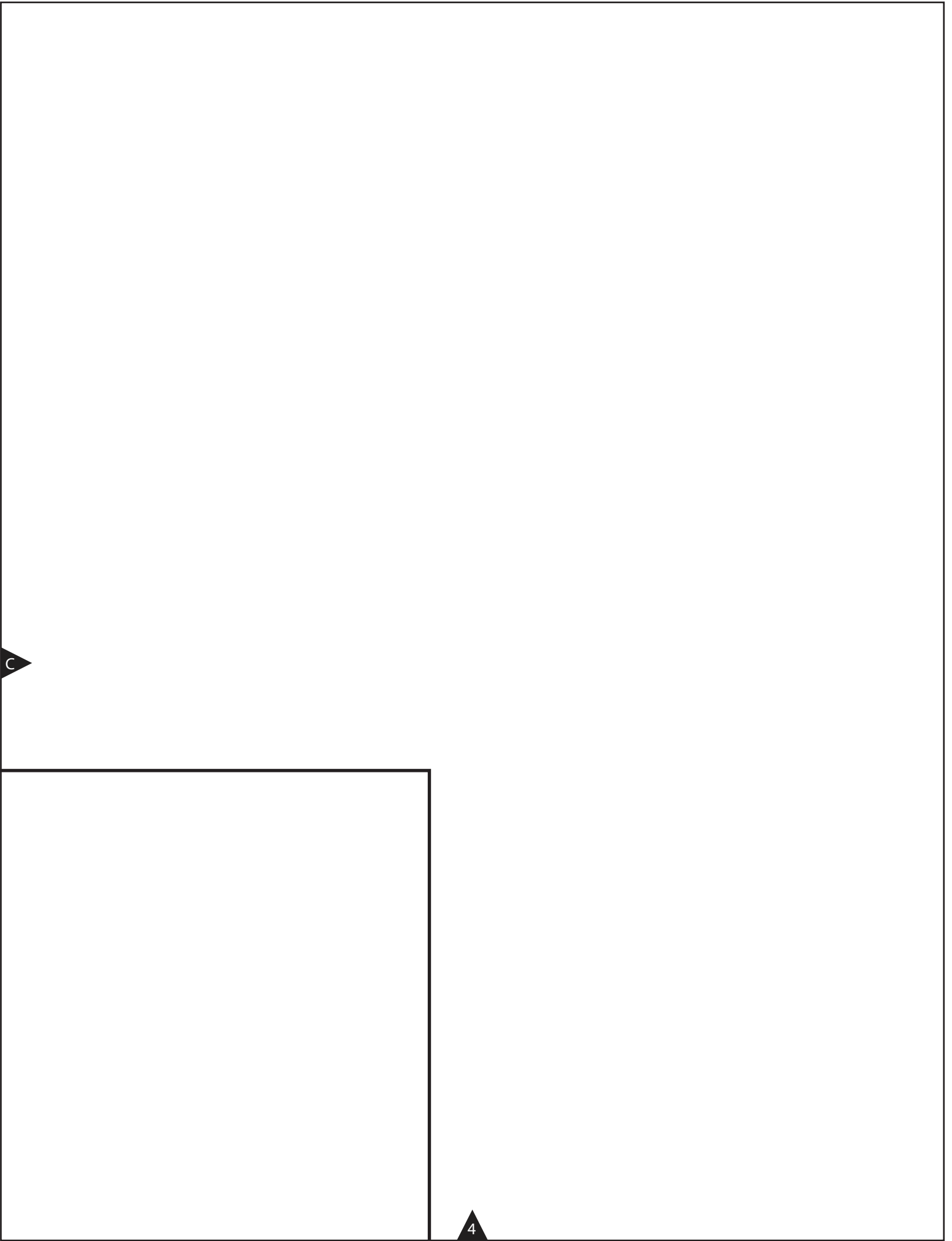
B

C

FRONT
Cut 1.

3





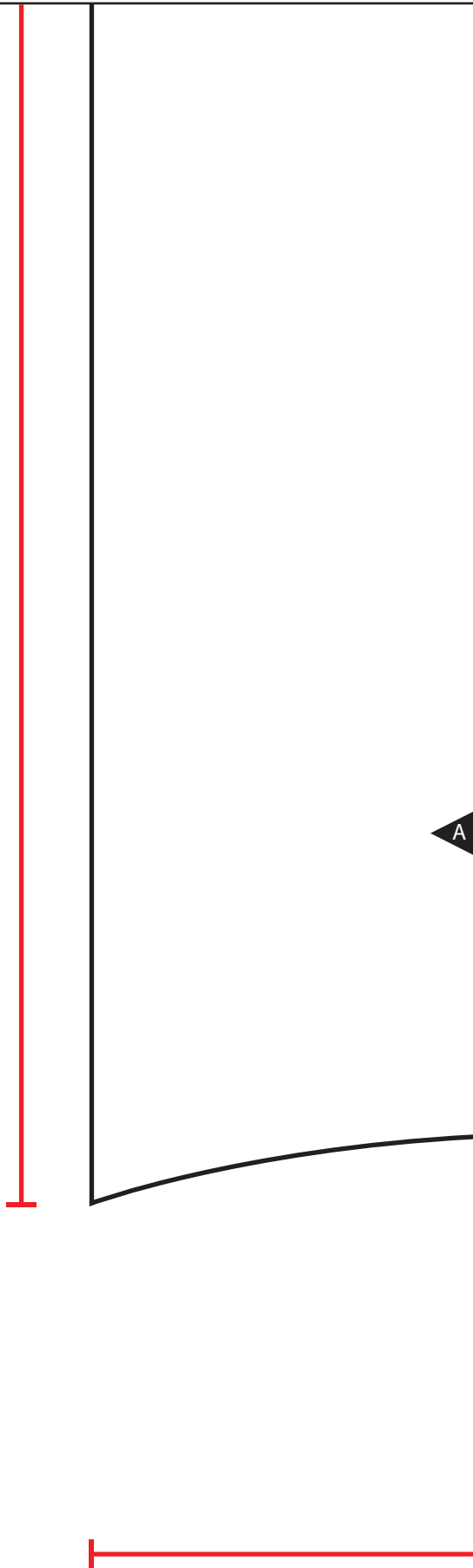
c

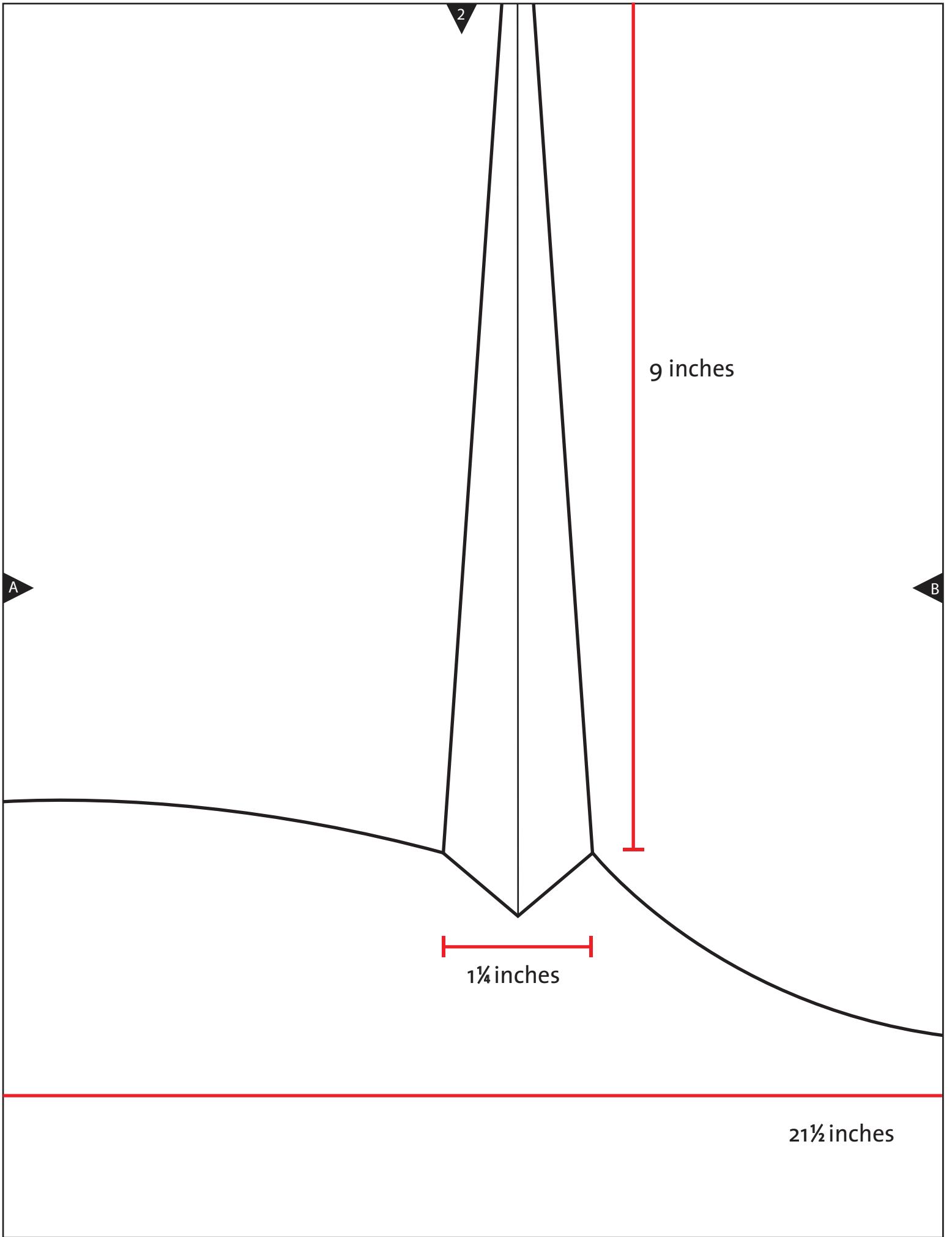
4

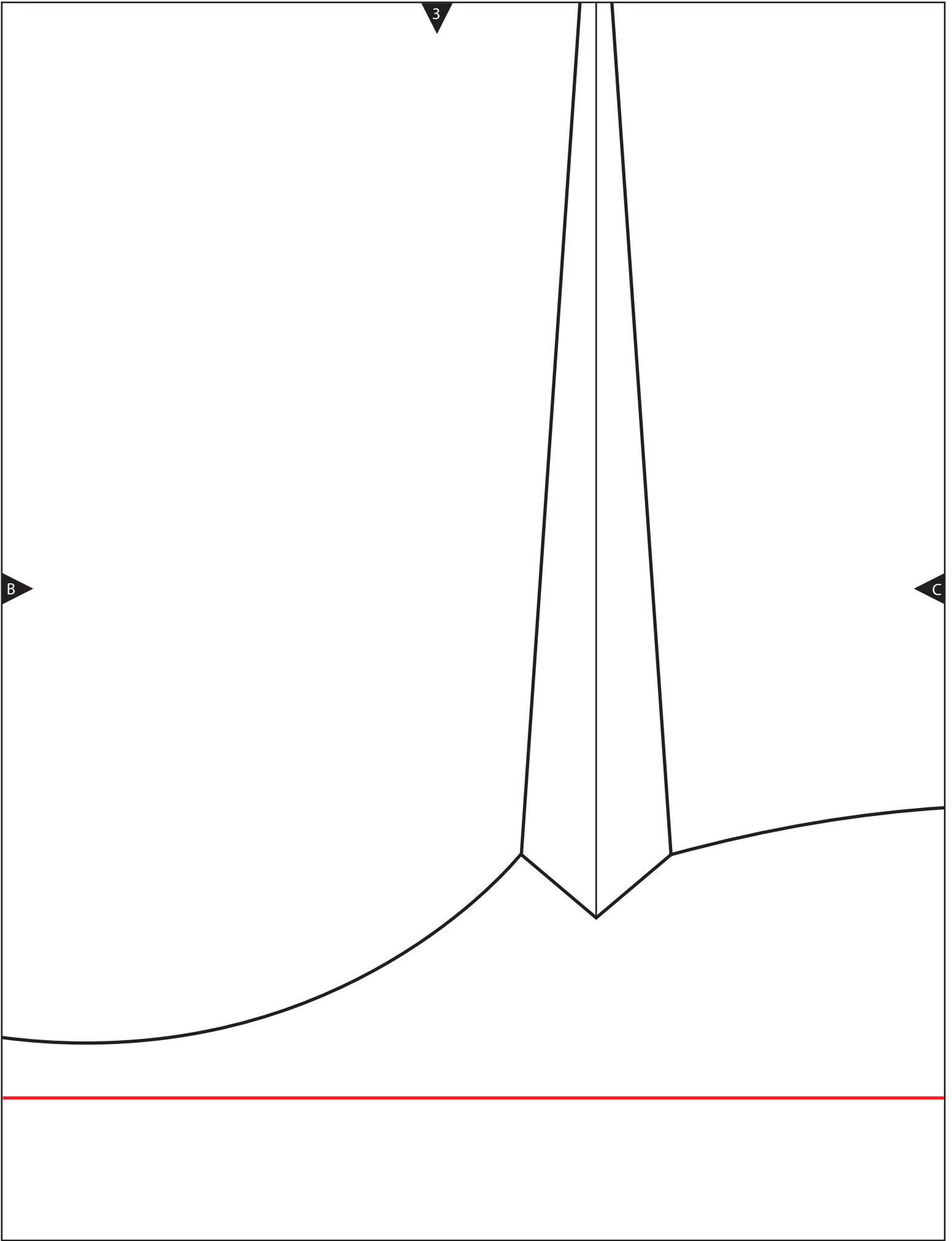
1

11 inches

A



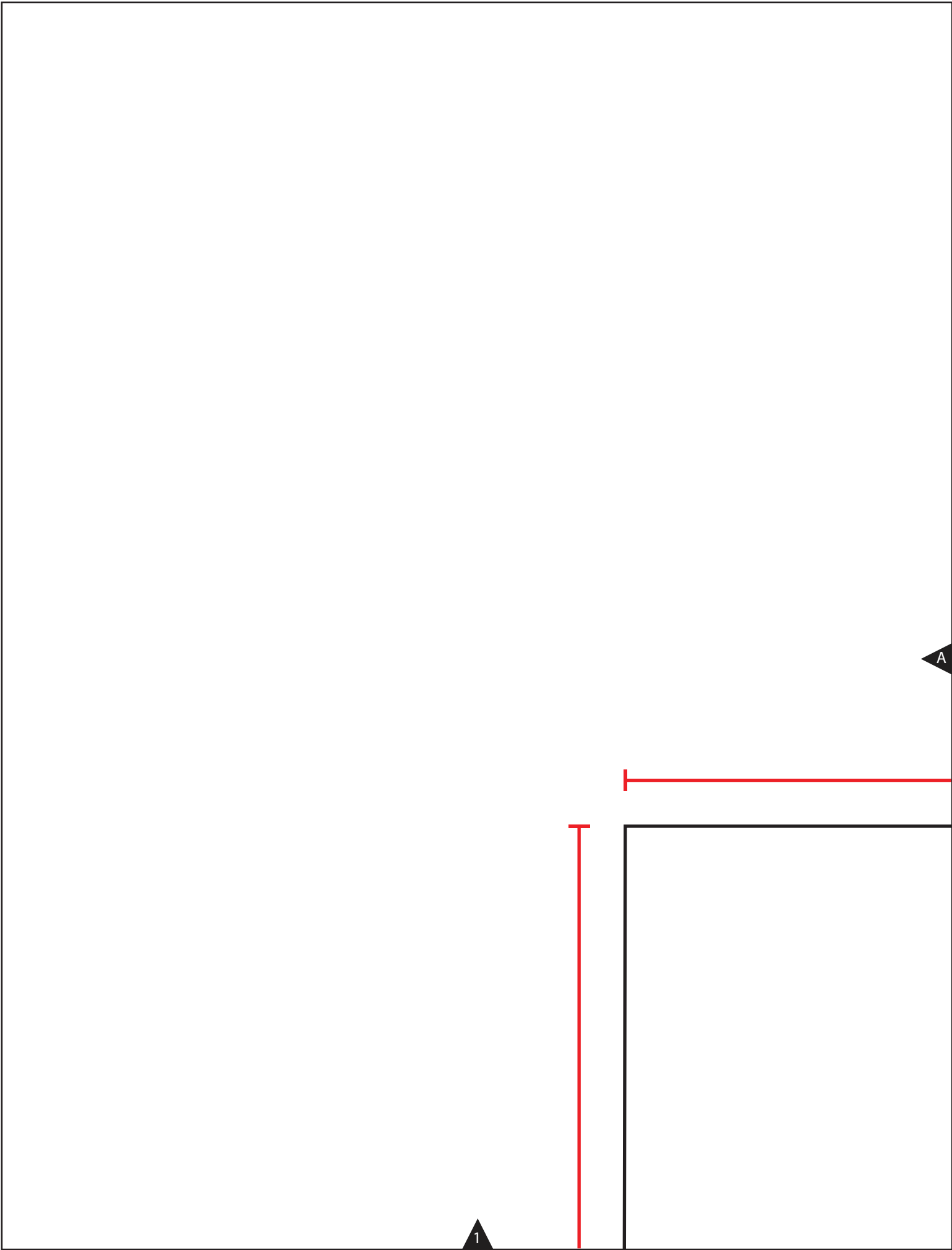


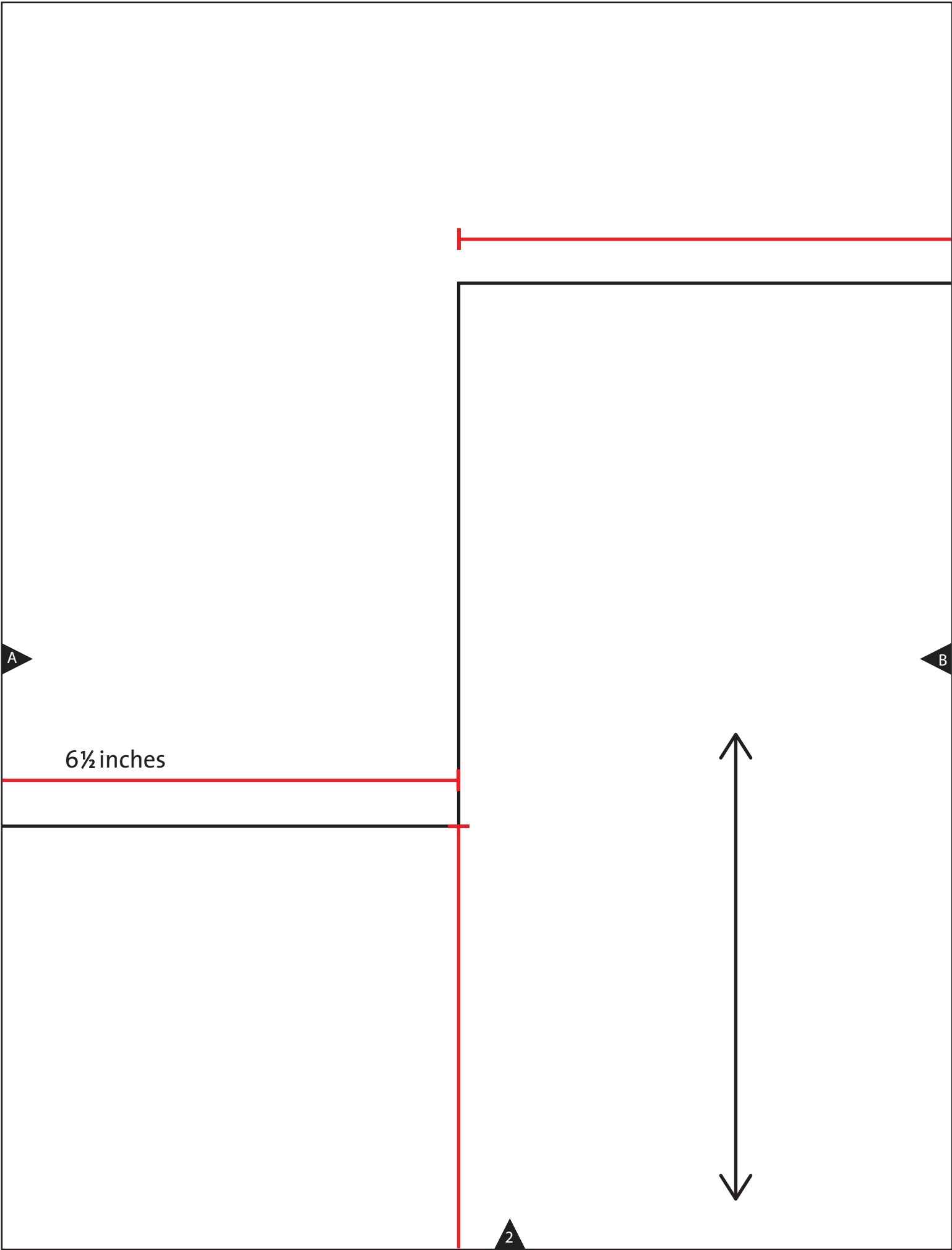


4

C







8½ inches

4½ inches

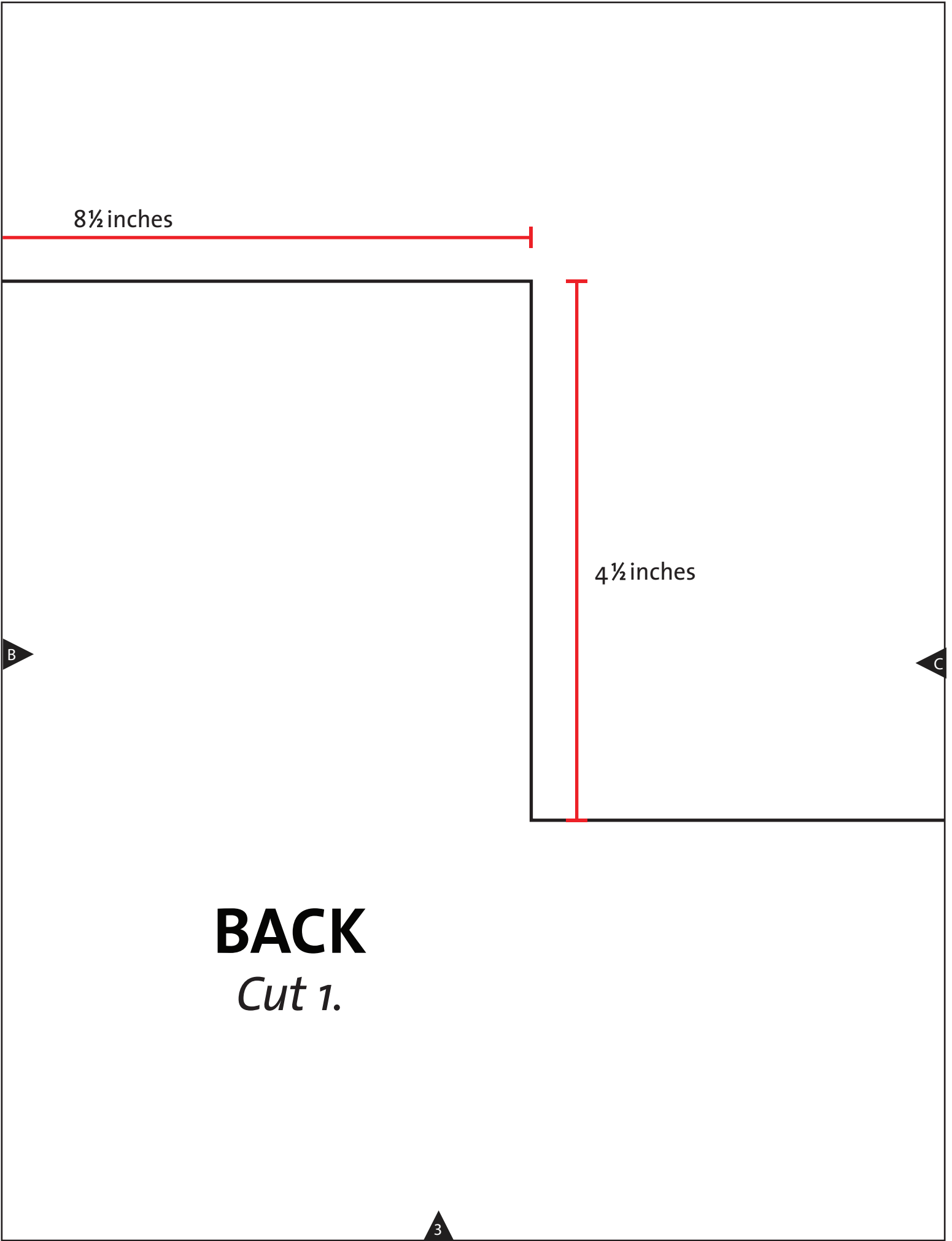
B

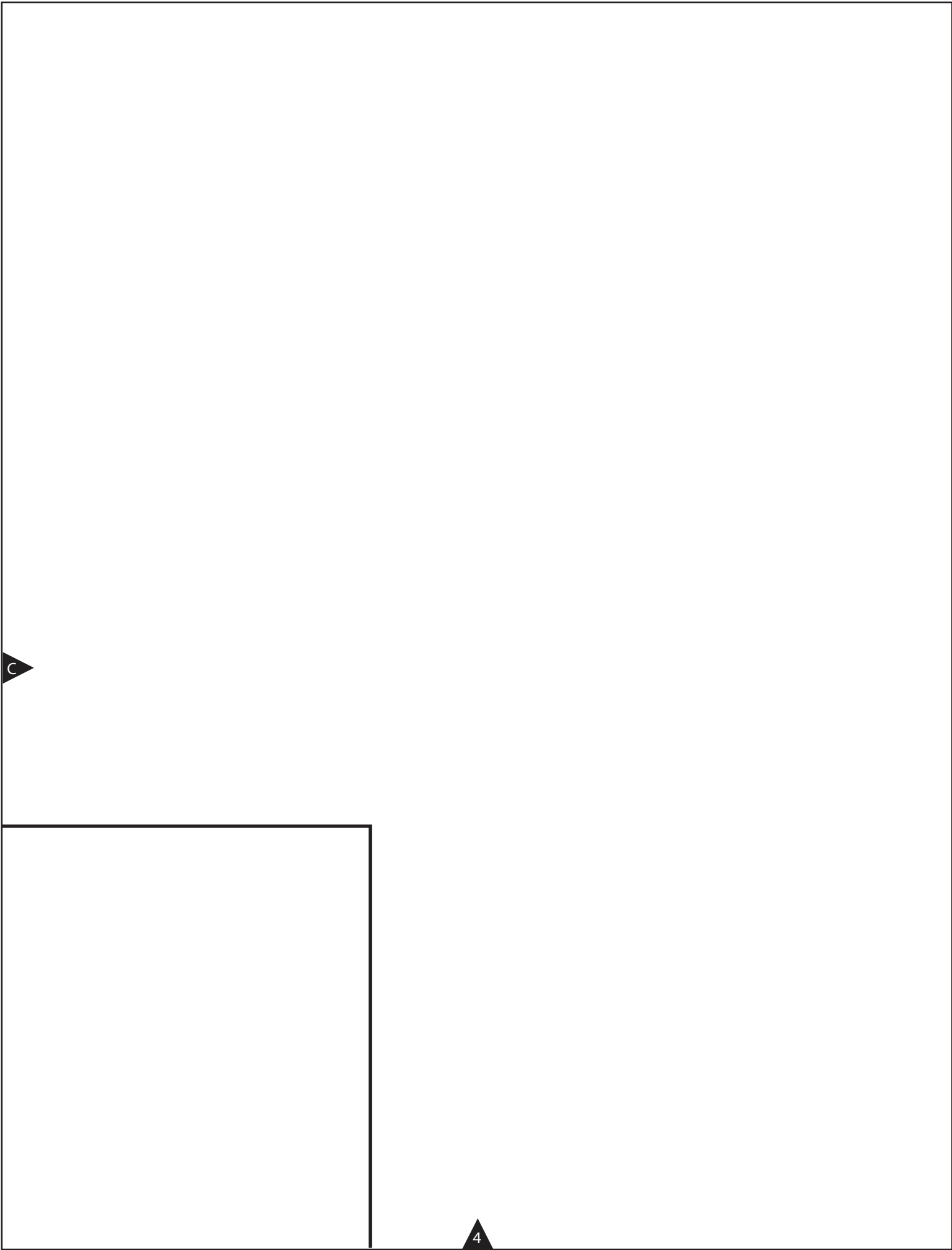
C

BACK

Cut 1.

3





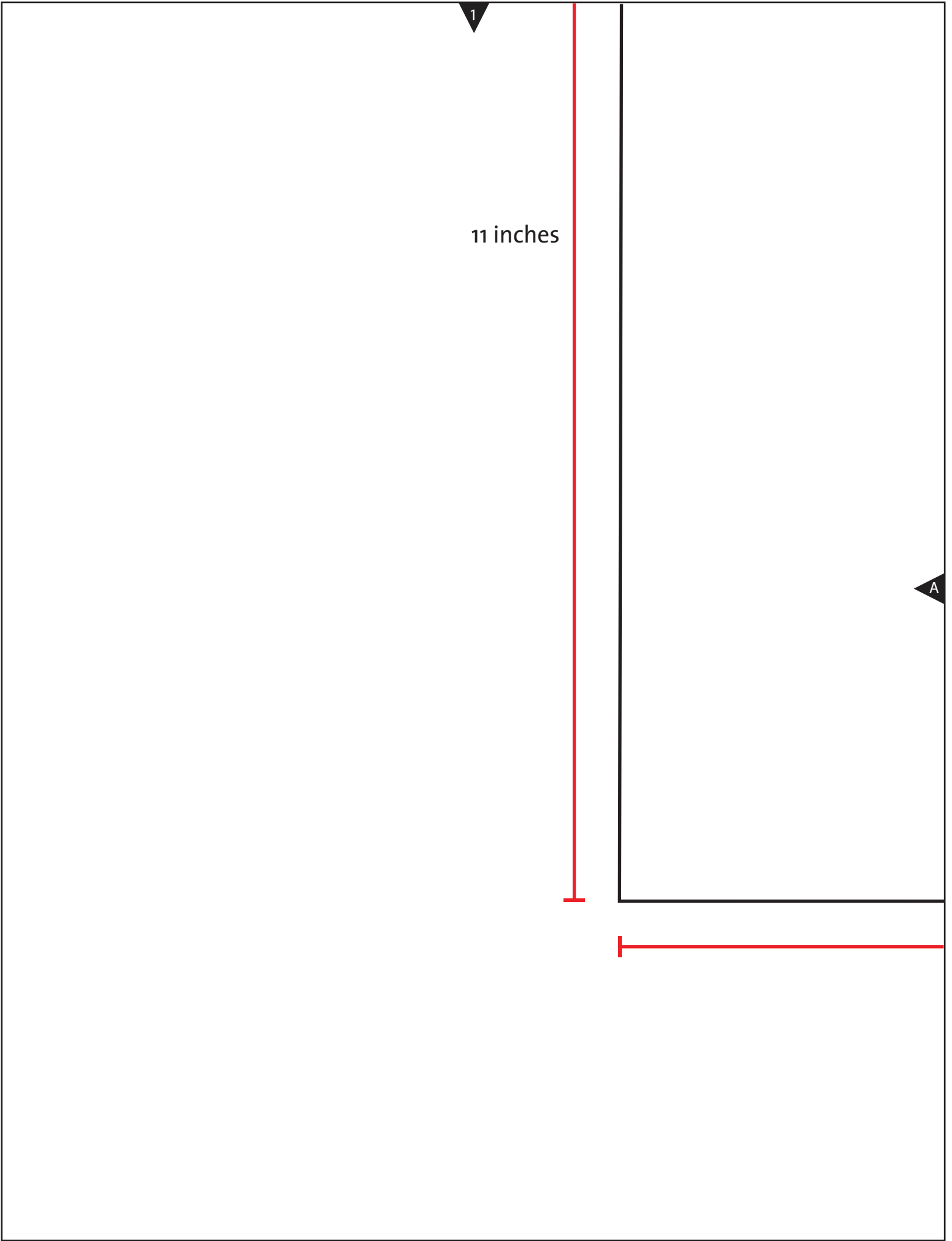
c

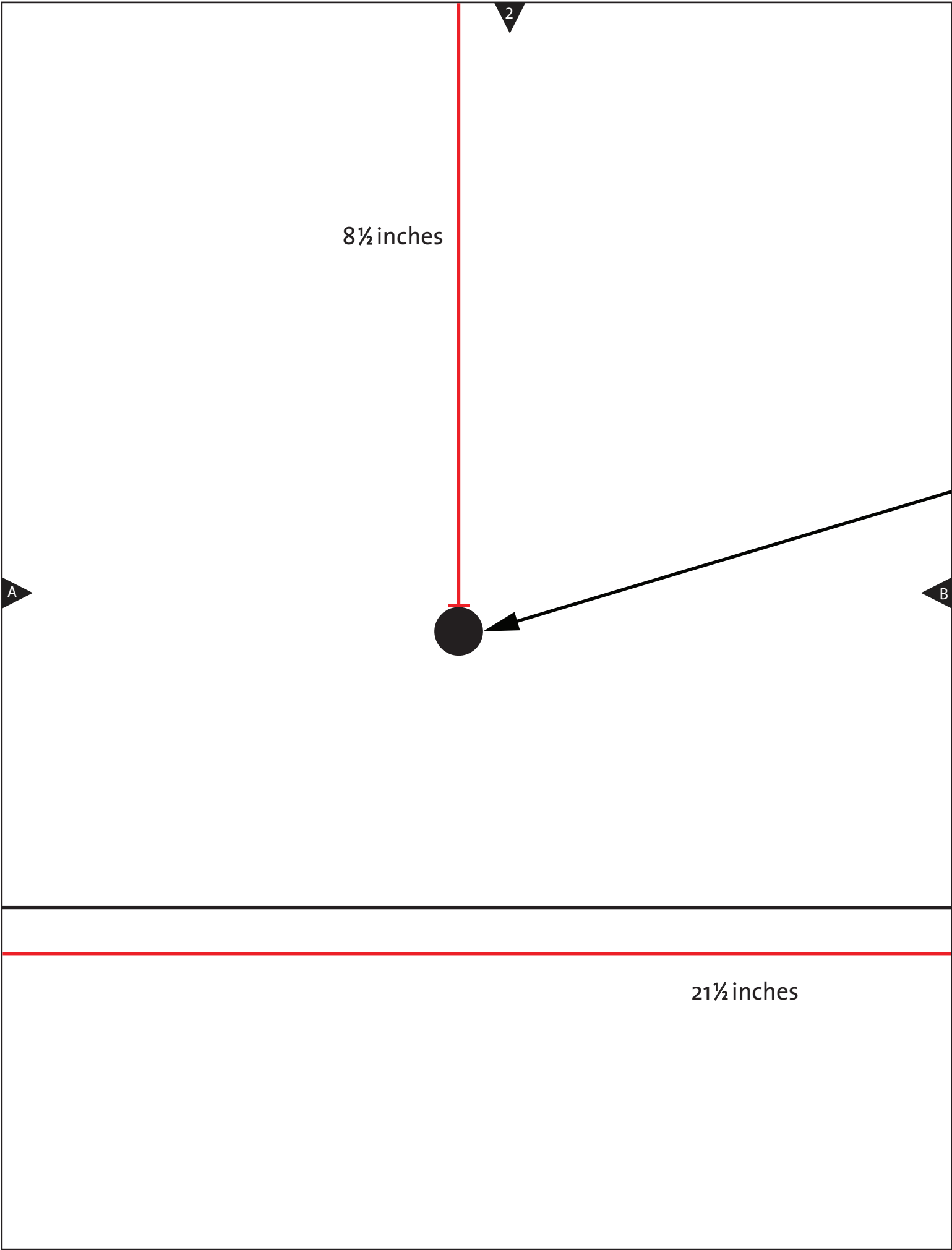
4

1

11 inches

A





$8\frac{1}{2}$ inches

2

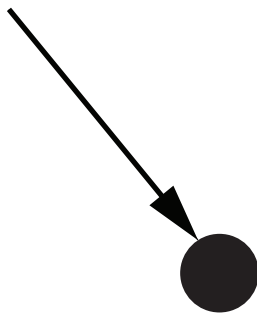
A

B

$21\frac{1}{2}$ inches

3

Tie placement



B

C



4

C

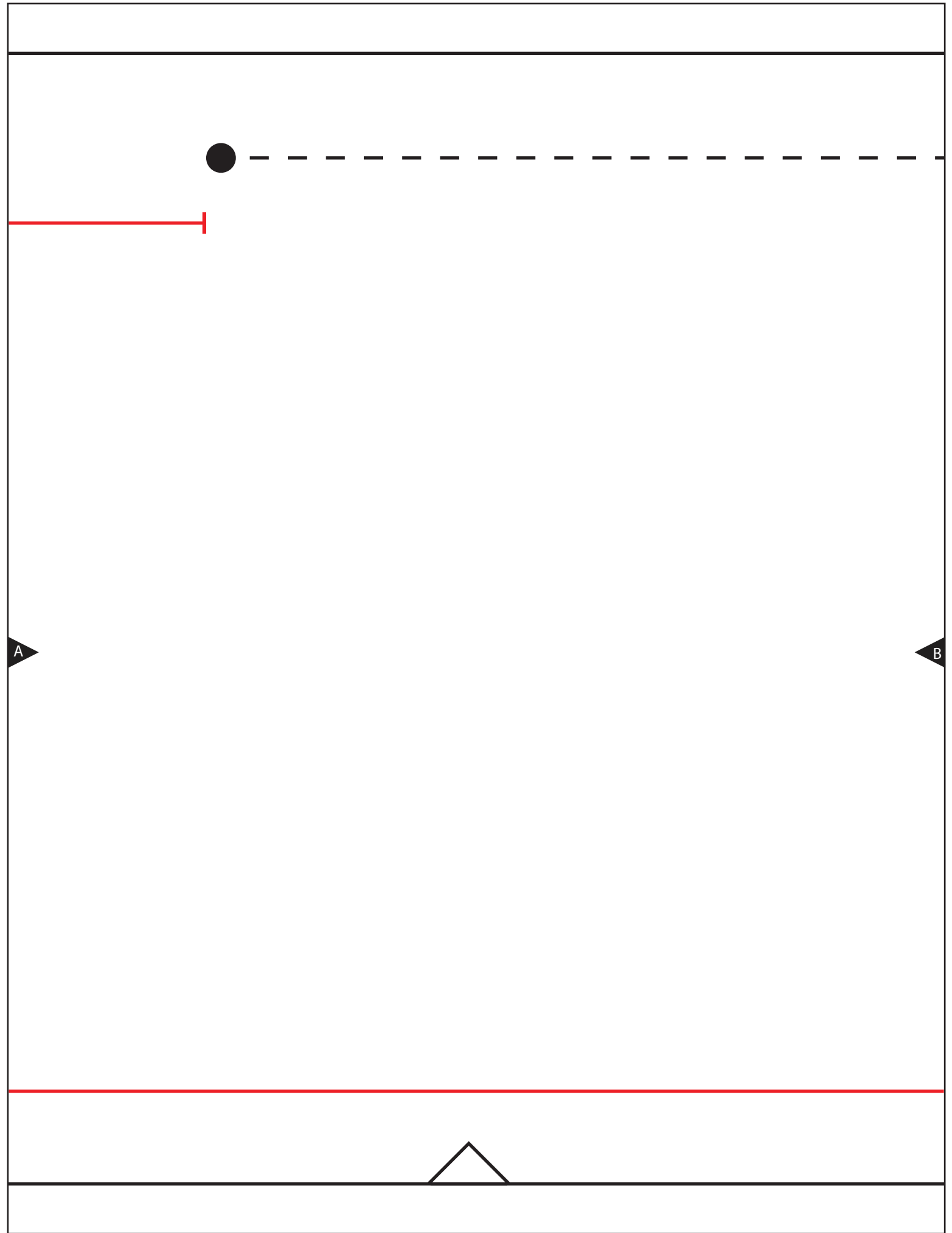


Underarm
9½ inches

4½ inches

A





Shoulder casing



UPPER SLEEVE

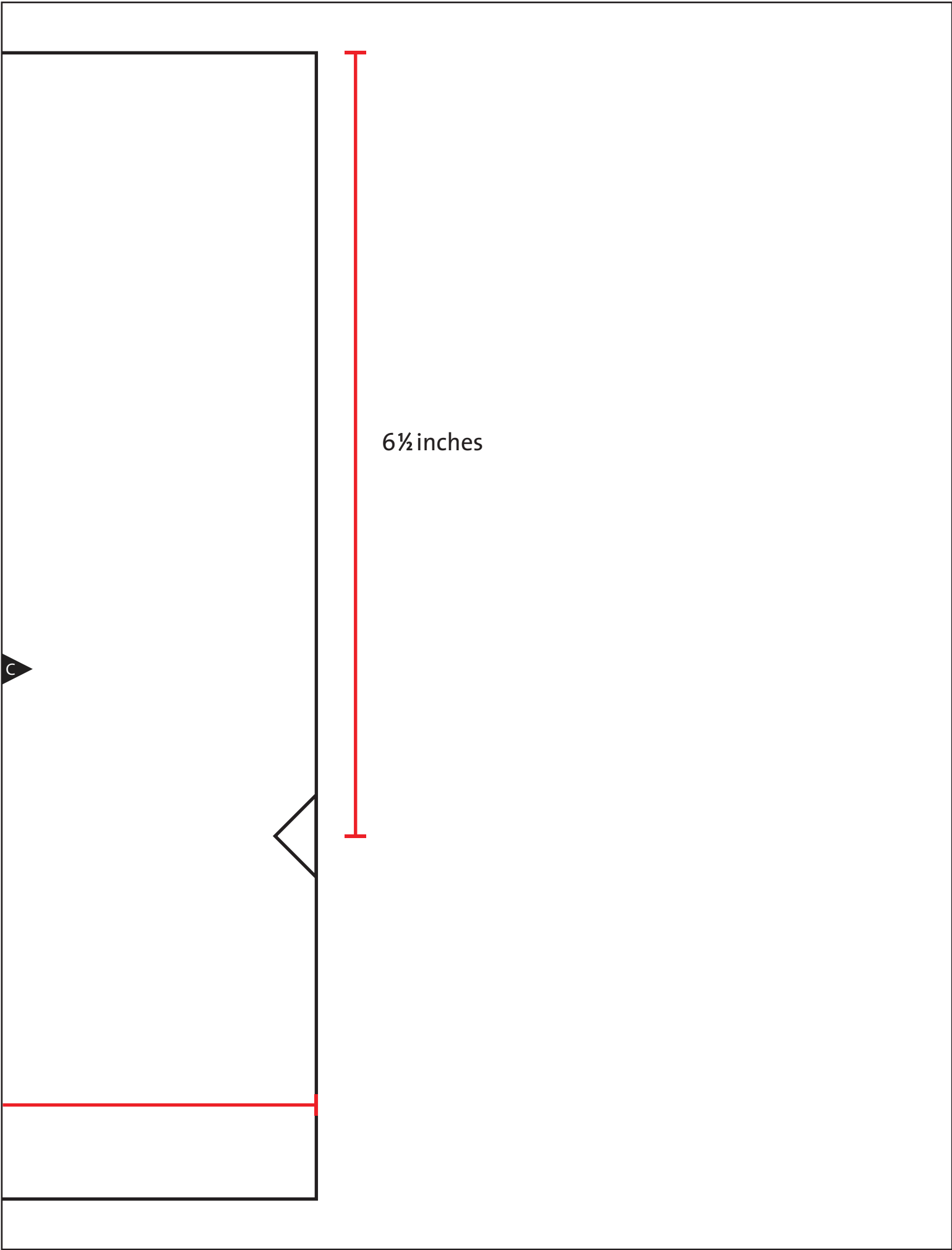
Cut 2.

B

C

21½ inches





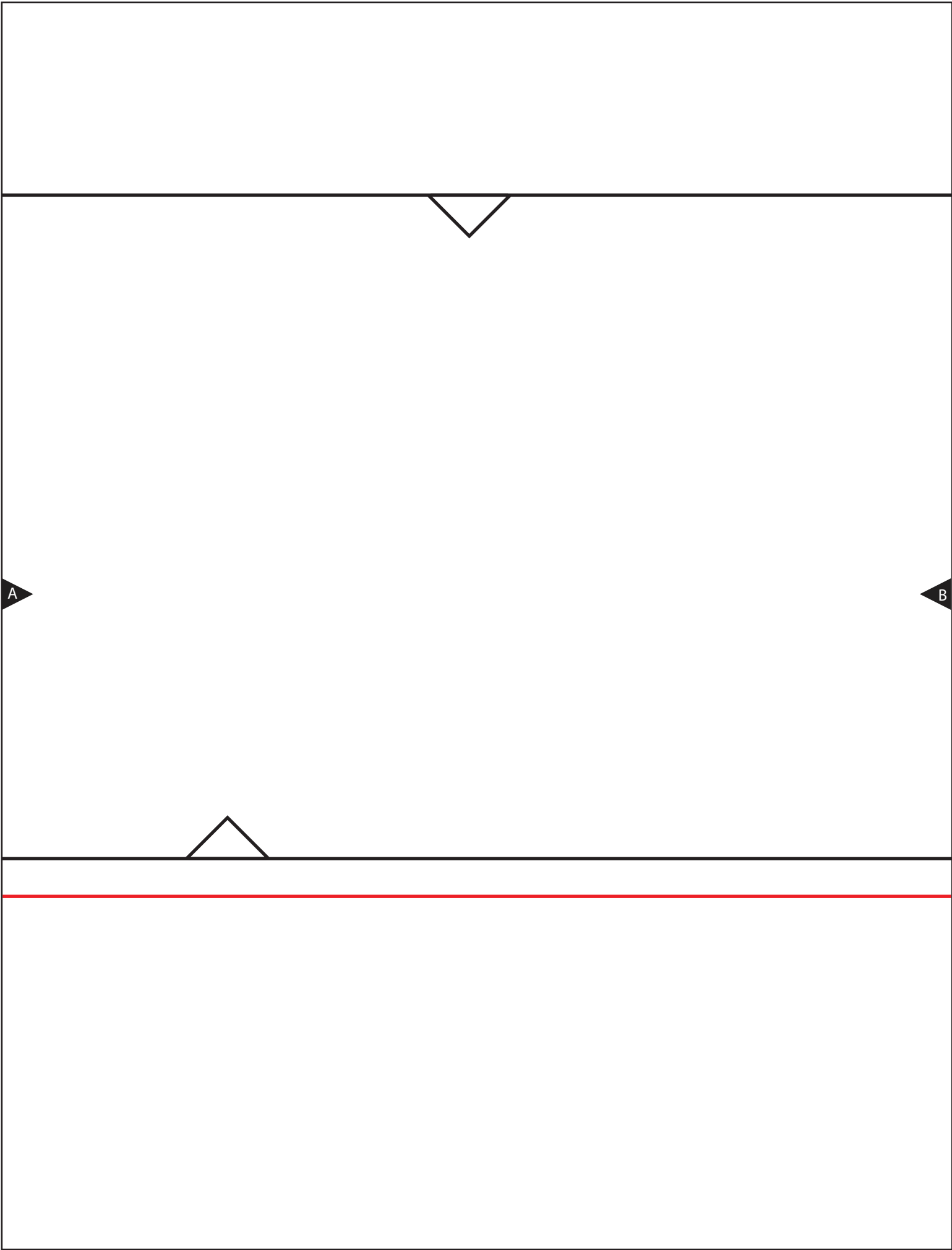
6½ inches



5½ inches

The diagram shows a large rectangular frame containing a smaller, solid black rectangle on the right side. A vertical red dimension line with horizontal end caps is positioned to the left of the smaller rectangle, spanning its full height. The text '5½ inches' is placed to the left of this dimension line. A horizontal red dimension line with vertical end caps is positioned below the smaller rectangle, spanning its full width. A small black triangle with the letter 'A' inside is located on the right edge of the smaller rectangle, pointing towards its center.

A

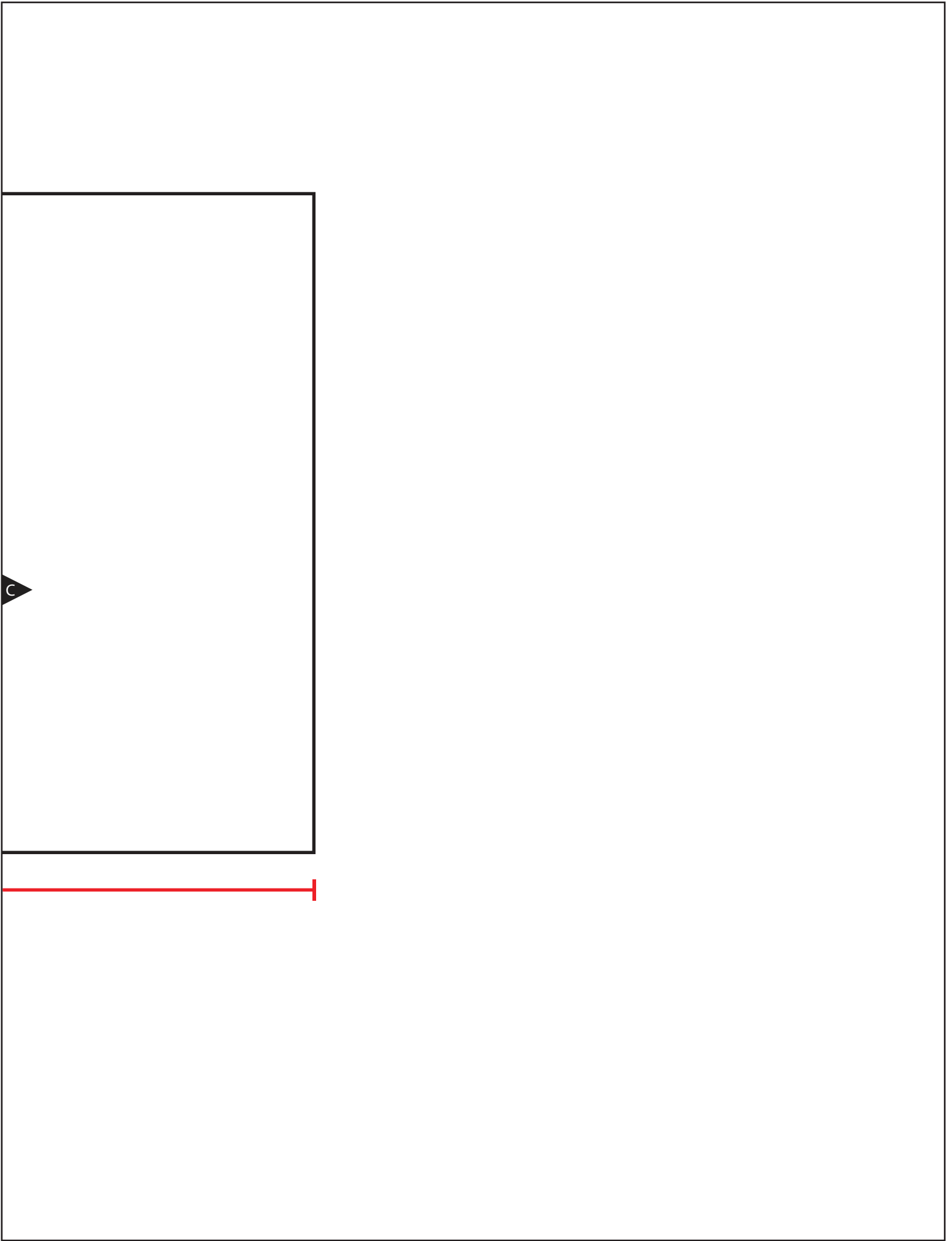


A diagram of a lower sleeve pattern. It consists of a large rectangular area with a horizontal line near the top and another near the bottom. A small inverted triangle is centered on the top horizontal line. The text "LOWER SLEEVE A" is centered in the middle of the diagram. Below it, the text "Cut 2." is centered. On the left side, there is a small triangle pointing right with the letter "B" next to it. On the right side, there is a small triangle pointing left with the letter "C" next to it. At the bottom, there is a horizontal red line, and below it, the text "21 1/2 inches" is written.

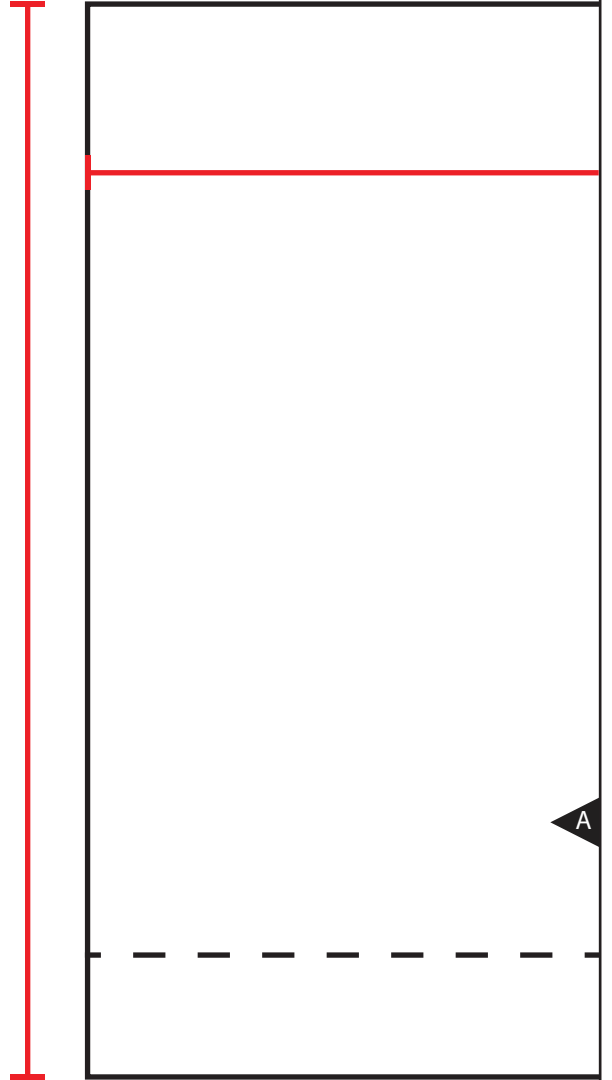
LOWER SLEEVE A

Cut 2.

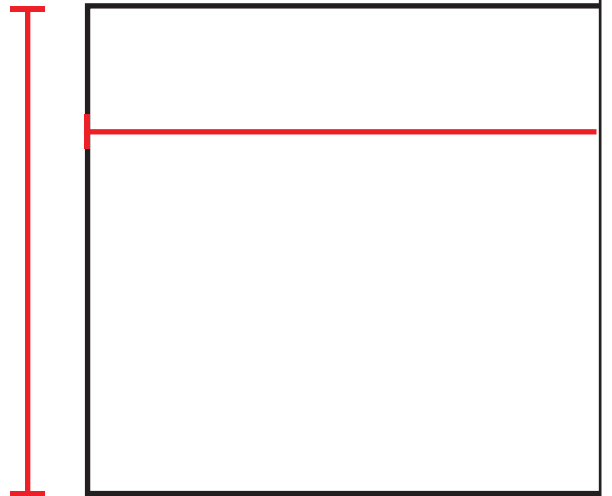
21½ inches



5½ inches



2½ inches





A

B

Wrist casing

21½ inches

LOWER SLEEVE B

Cut 2.

B

C

18 inches

TIE END

Cut 2.

