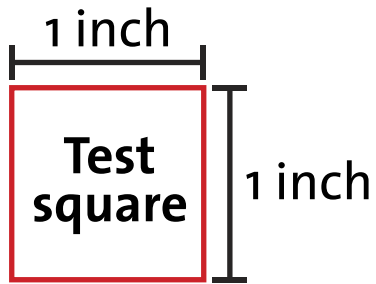
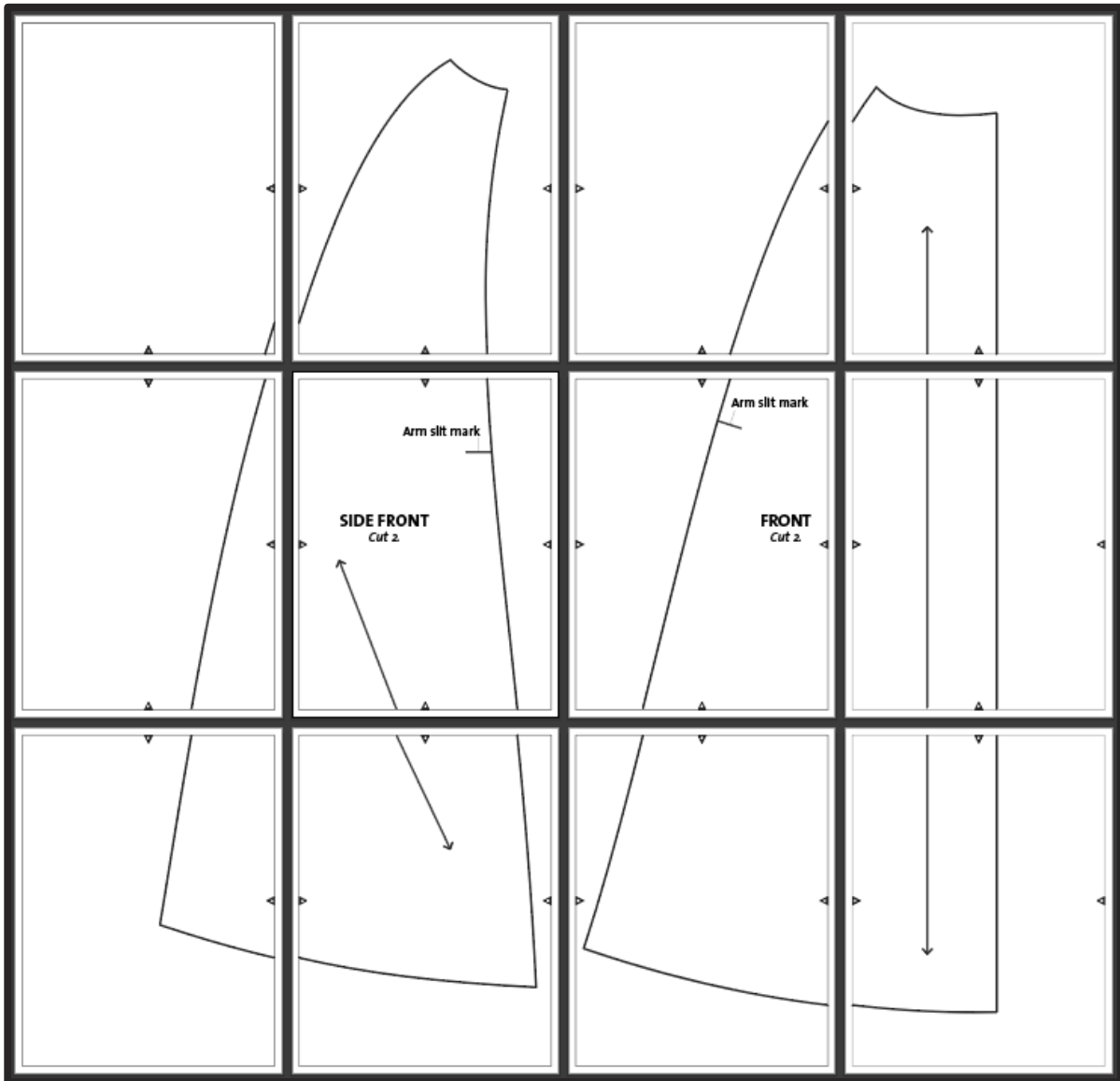


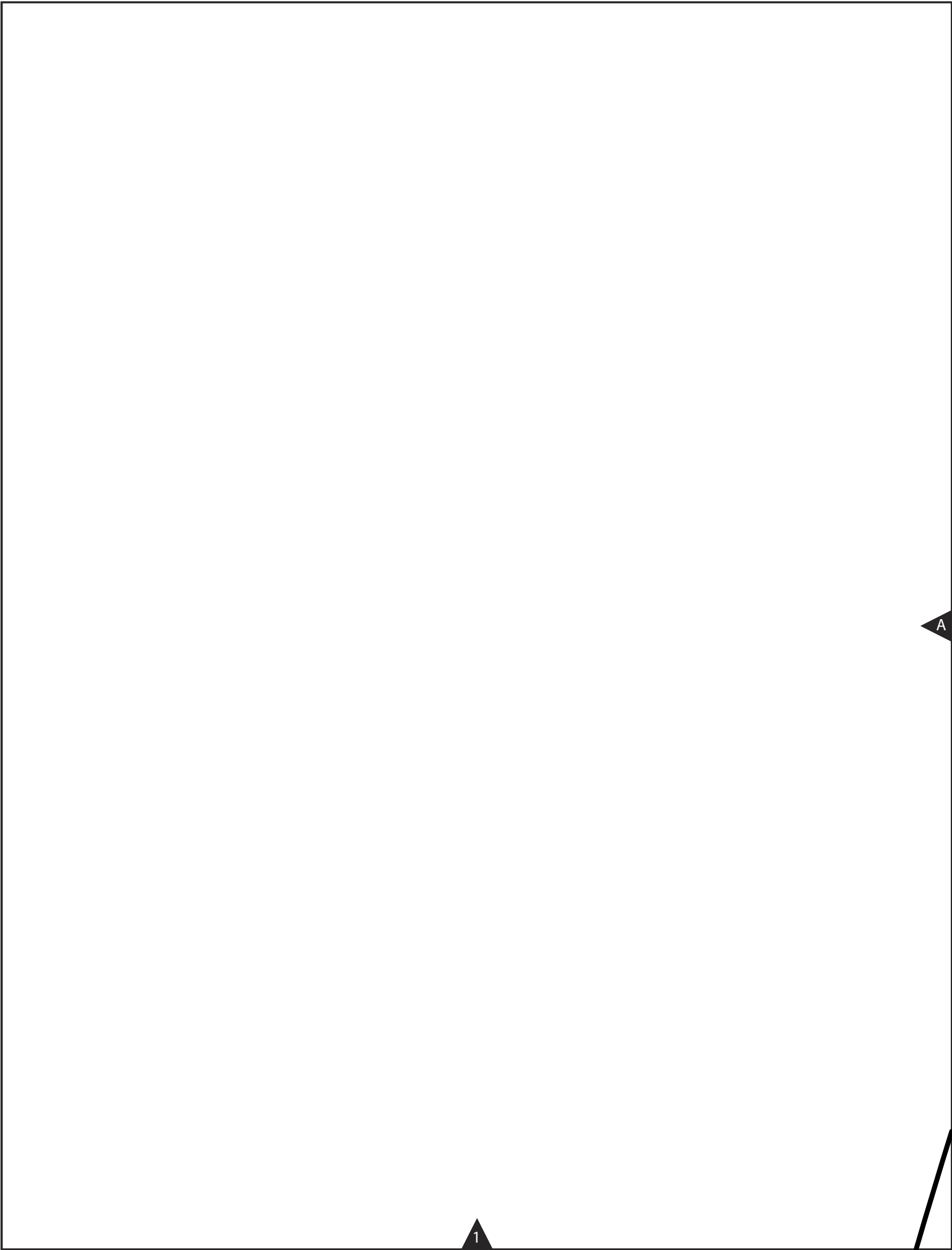
threads



Parisian Cape Pattern

5/8-inch-wide seam allowances included

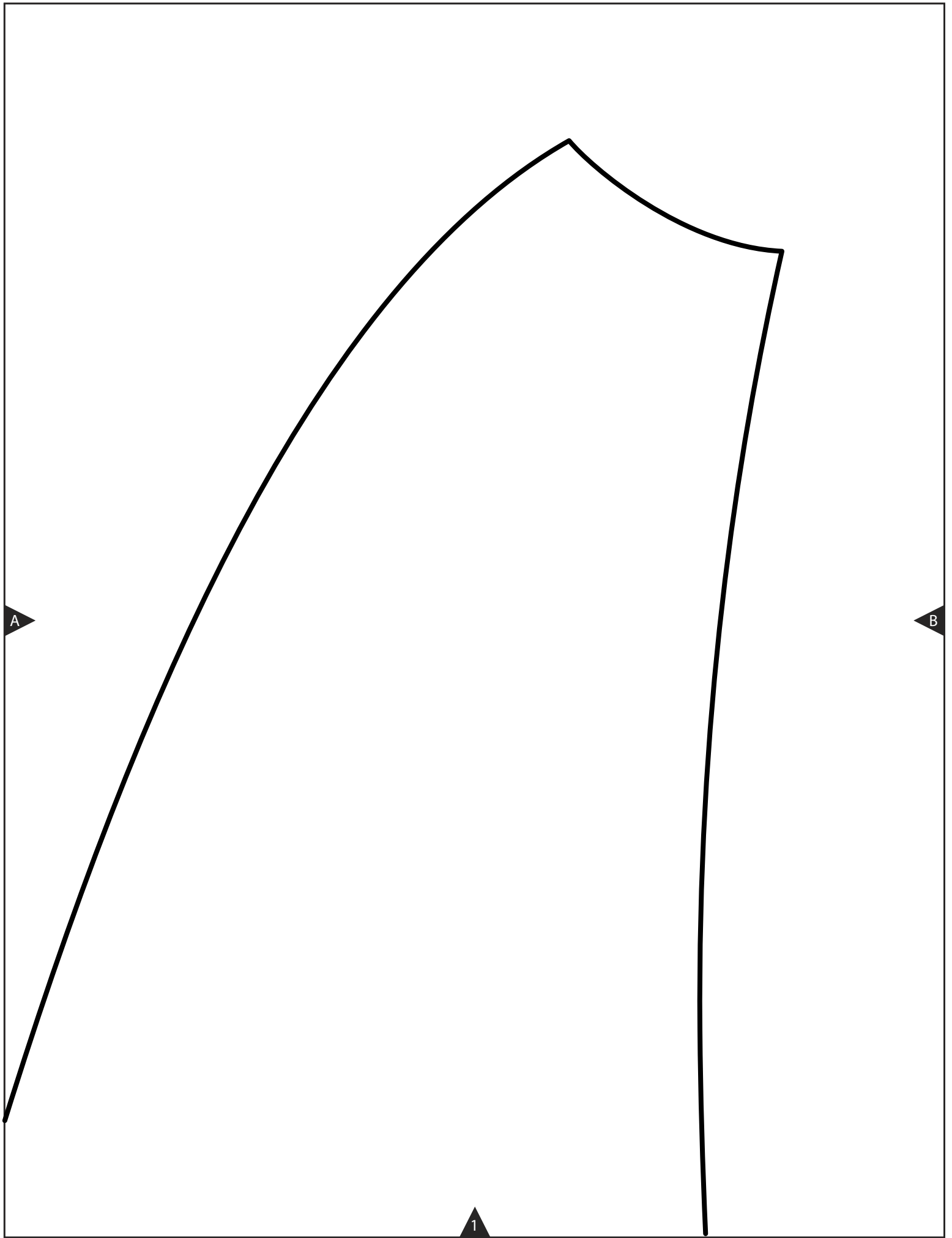


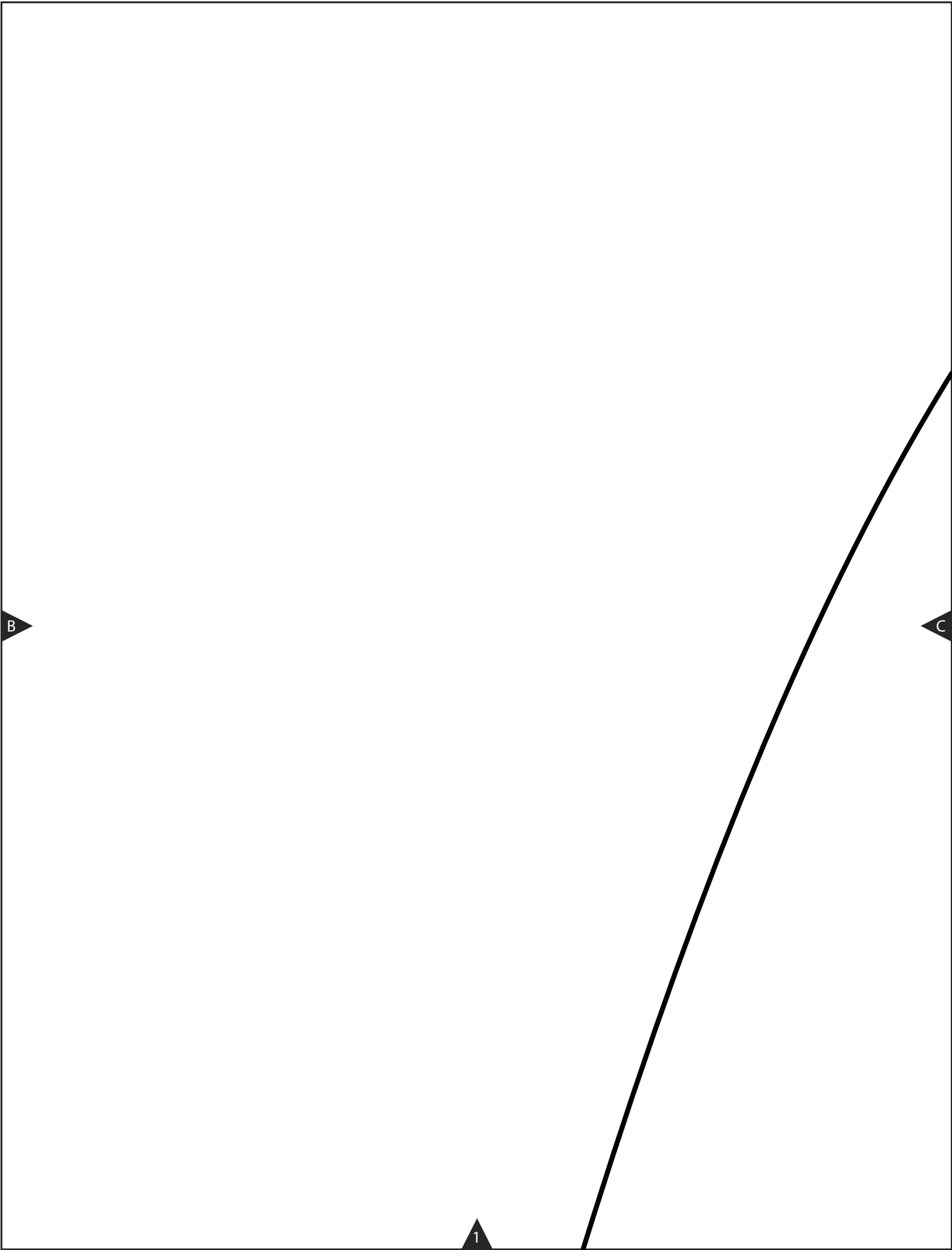


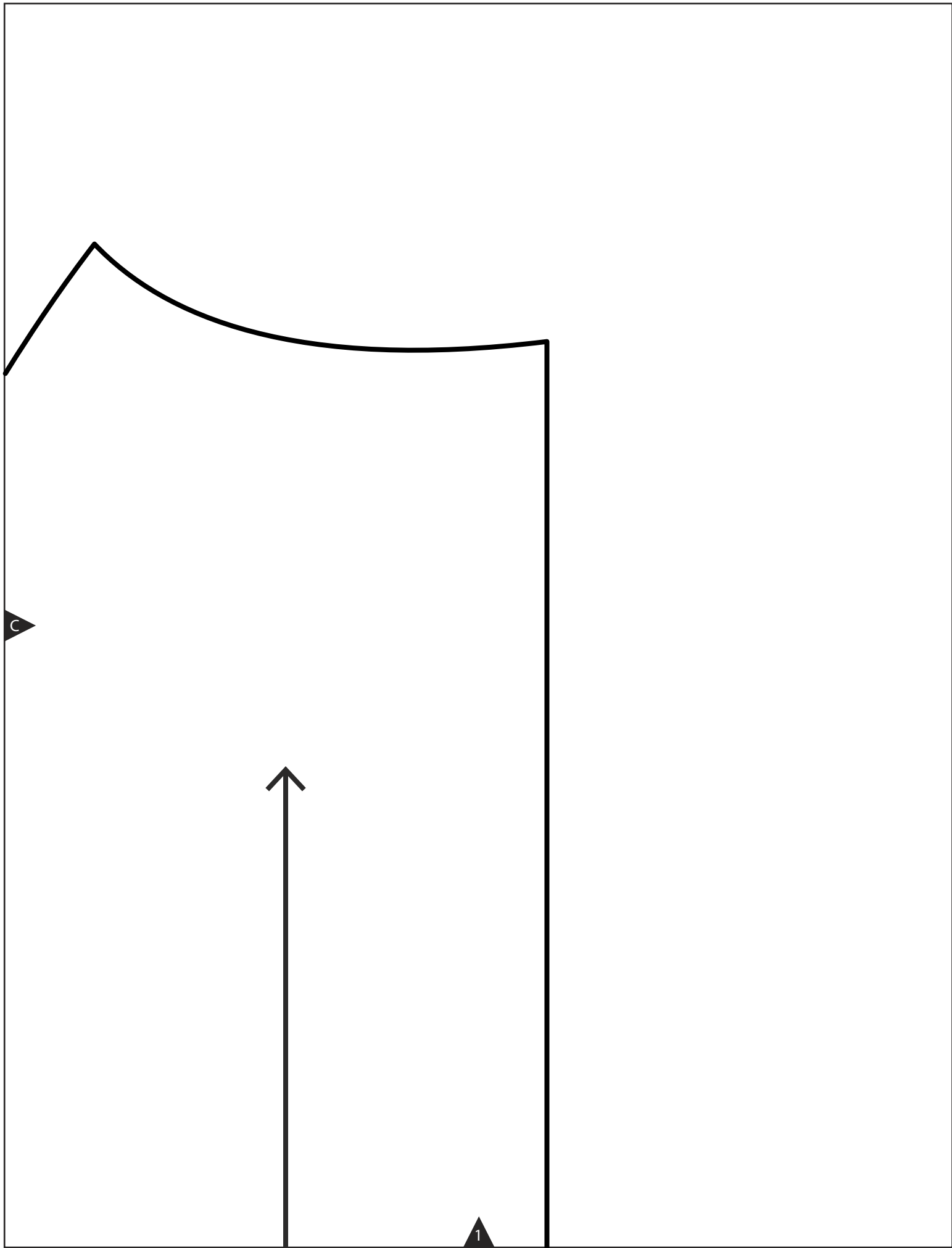
1

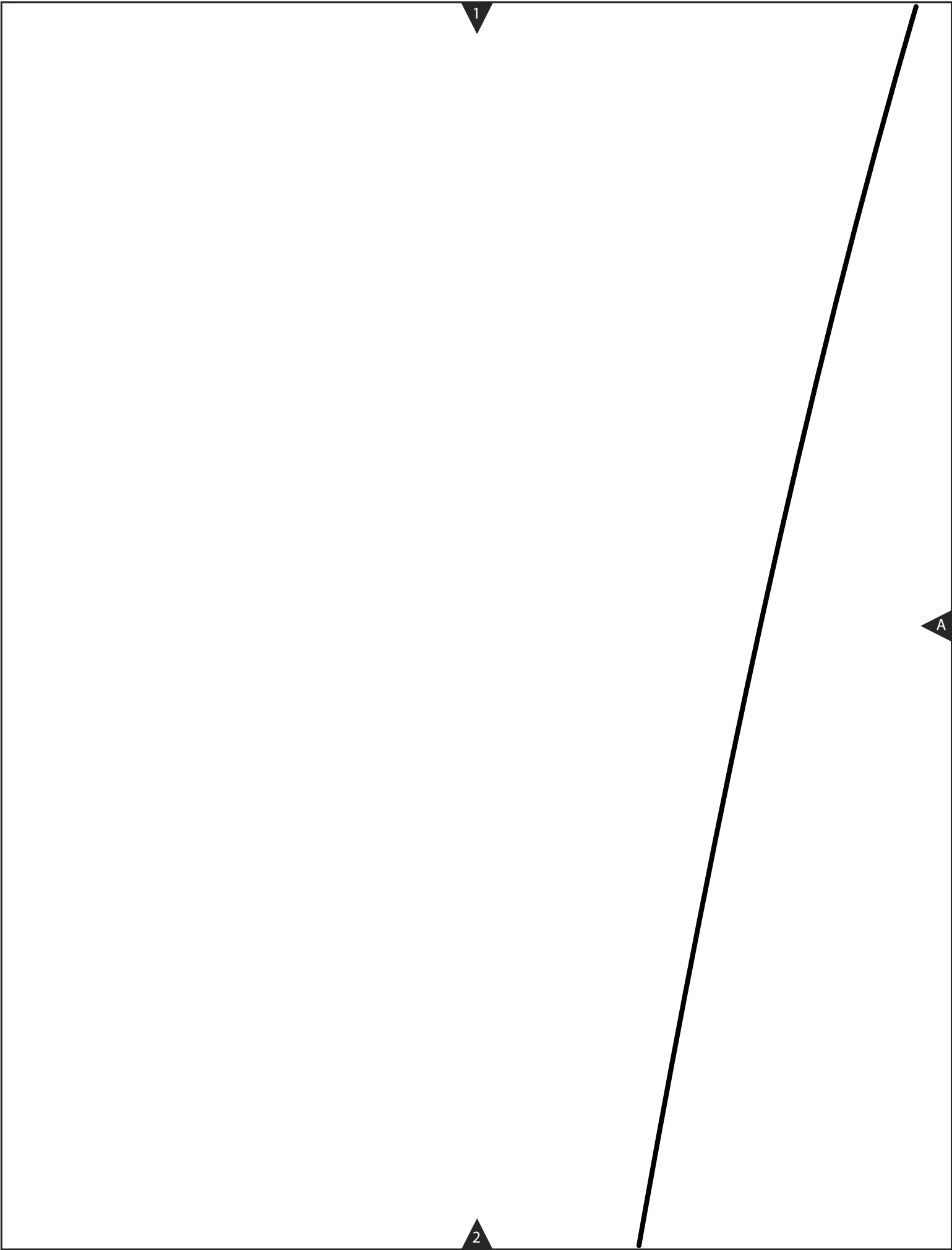
A











1

Arm slit mark



SIDE FRONT

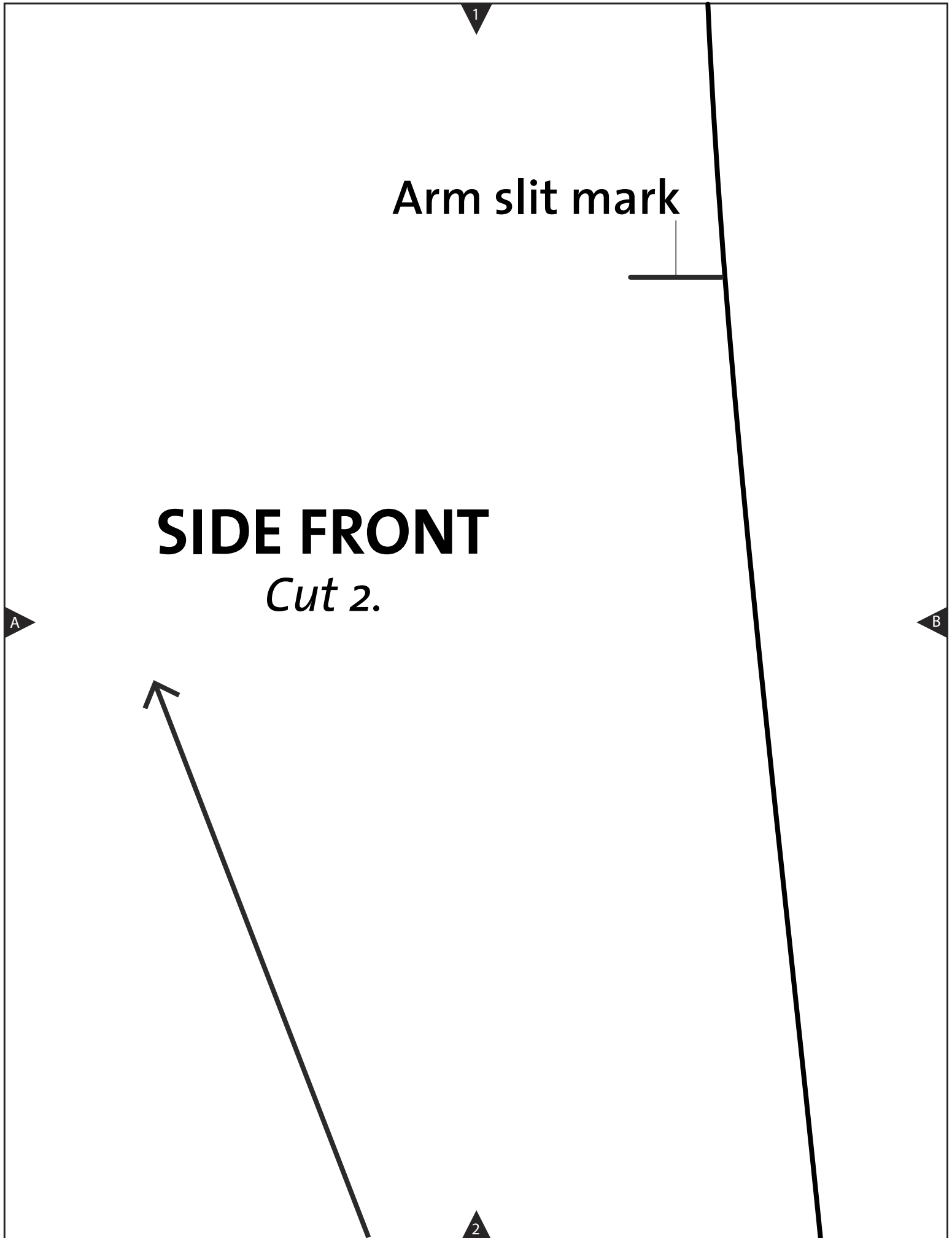
Cut 2.

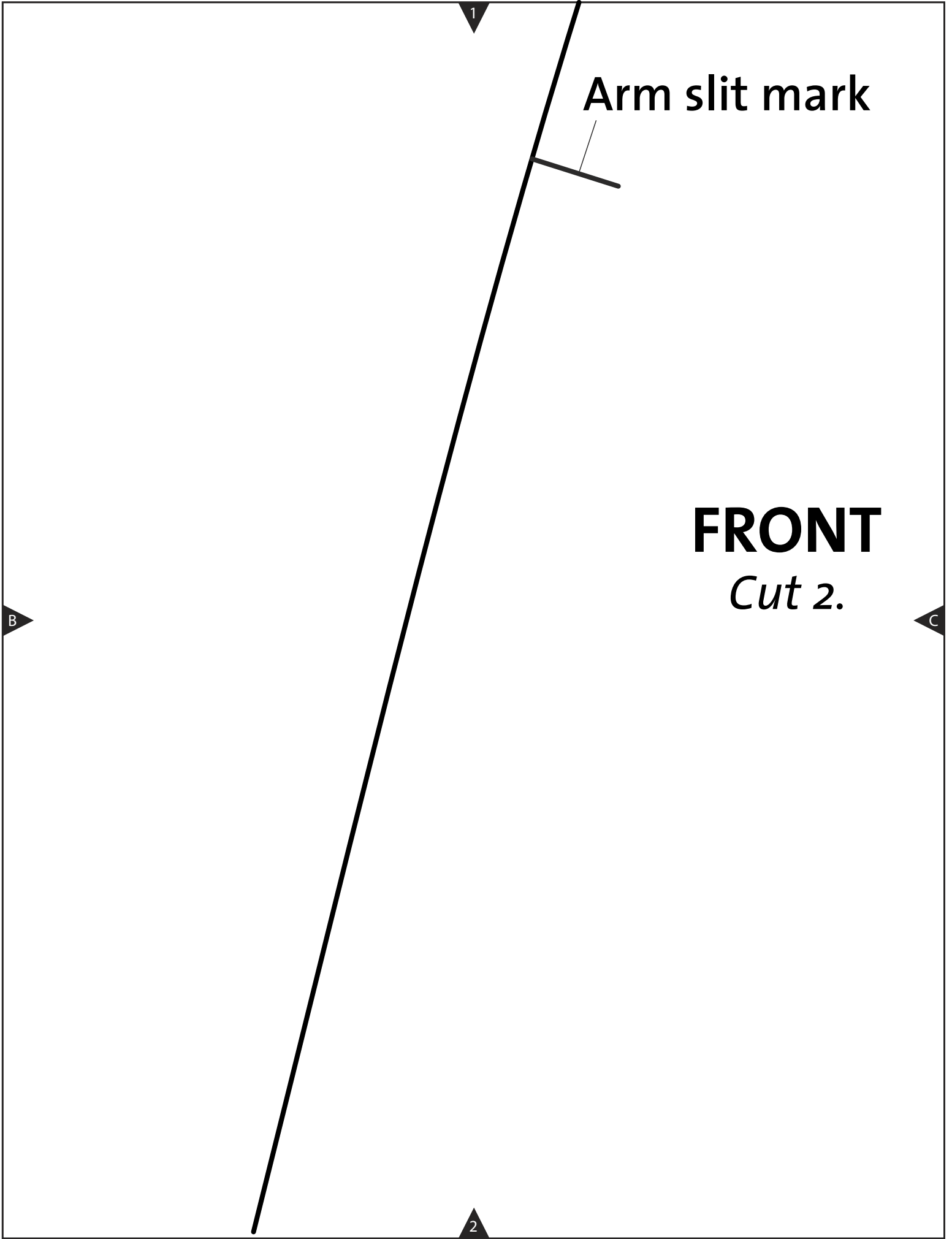
A

B



2





1

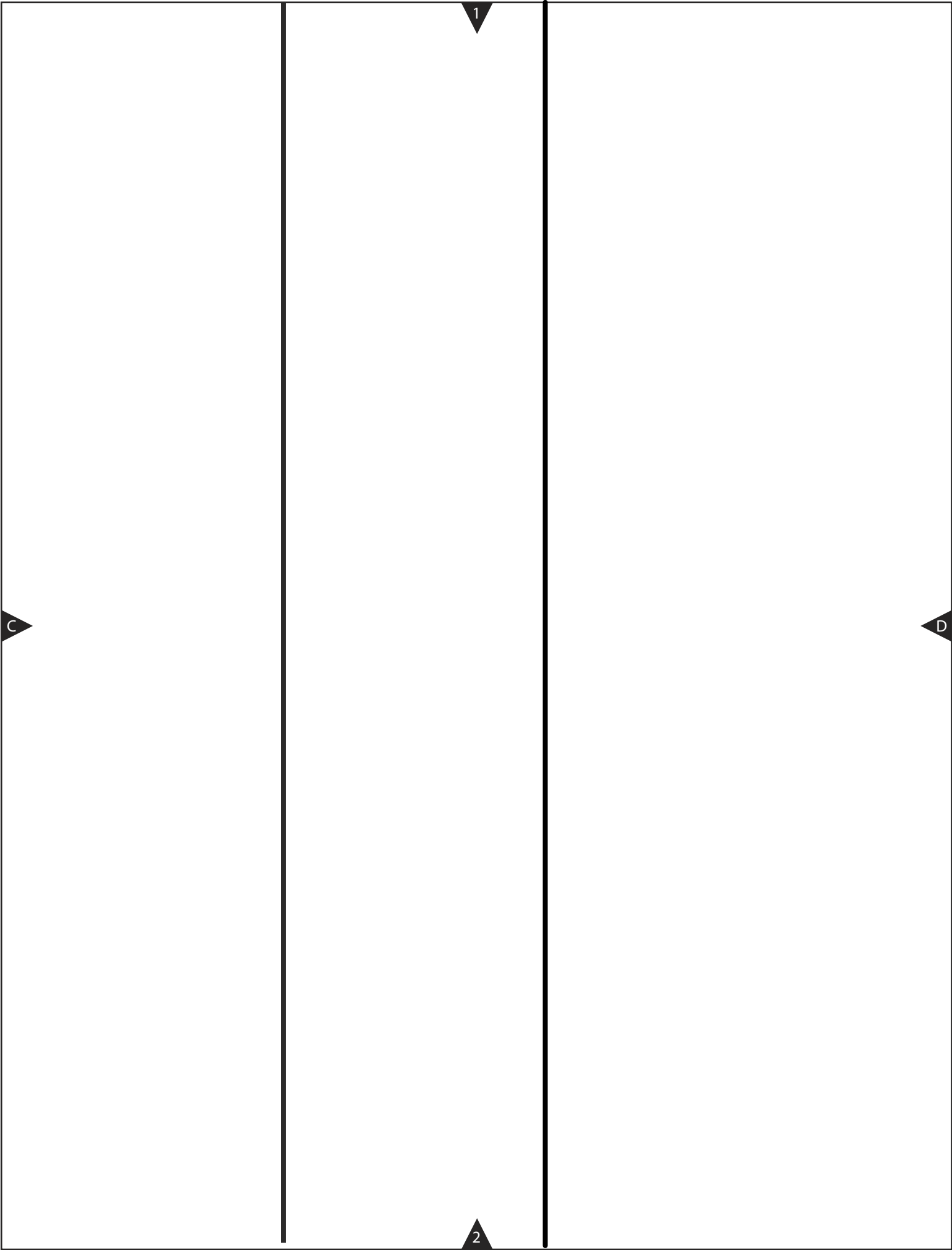
Arm slit mark

FRONT
Cut 2.

B

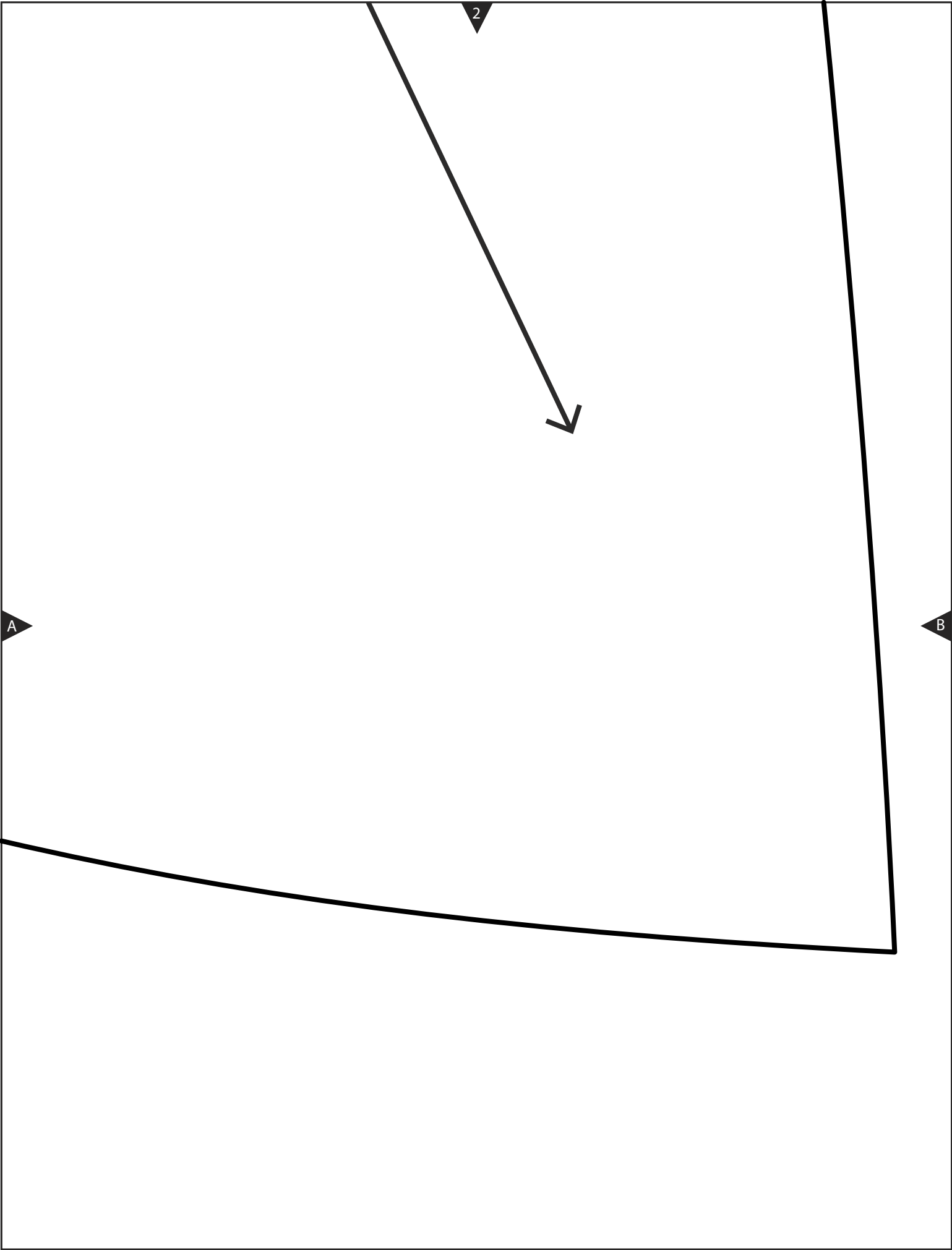
C

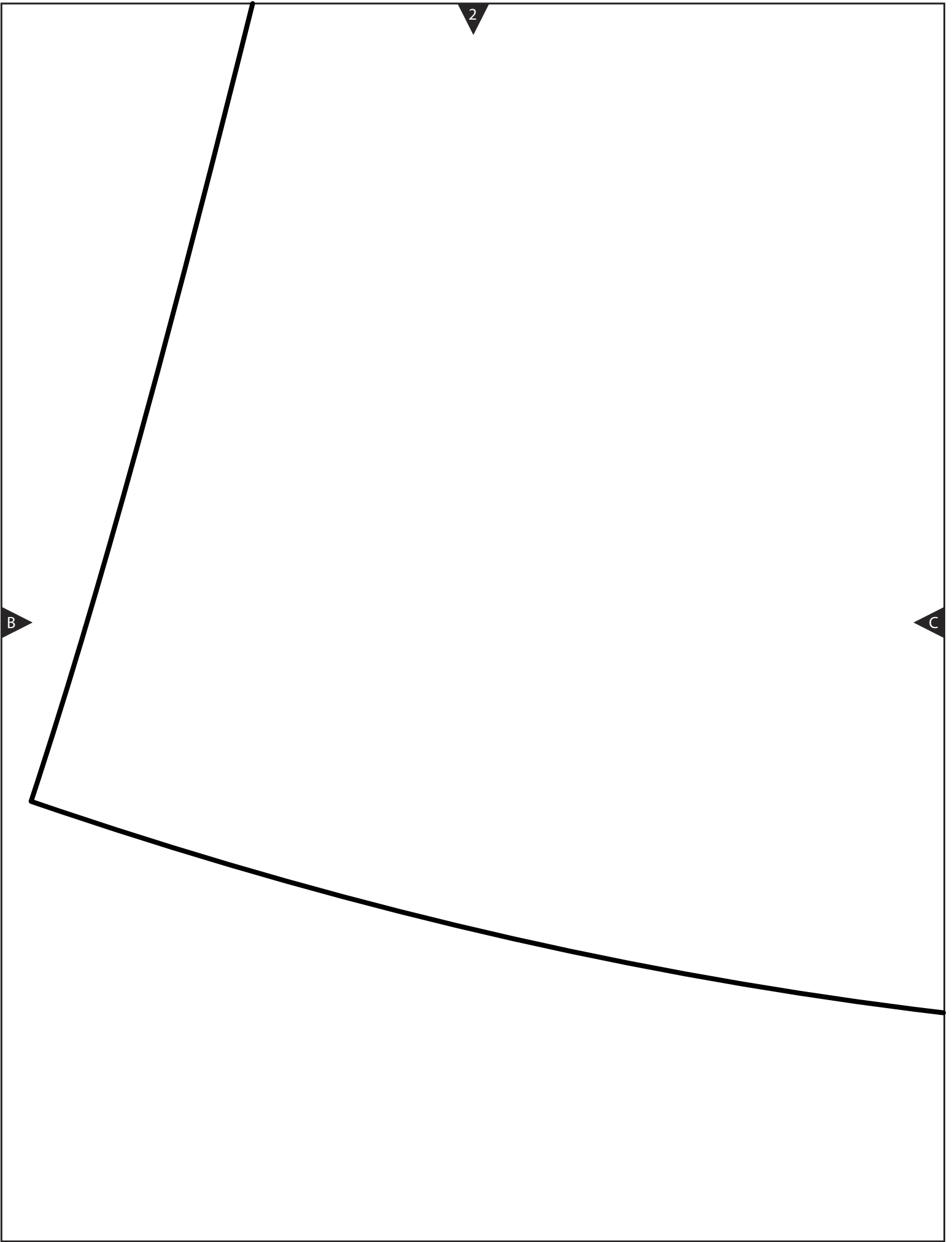
2

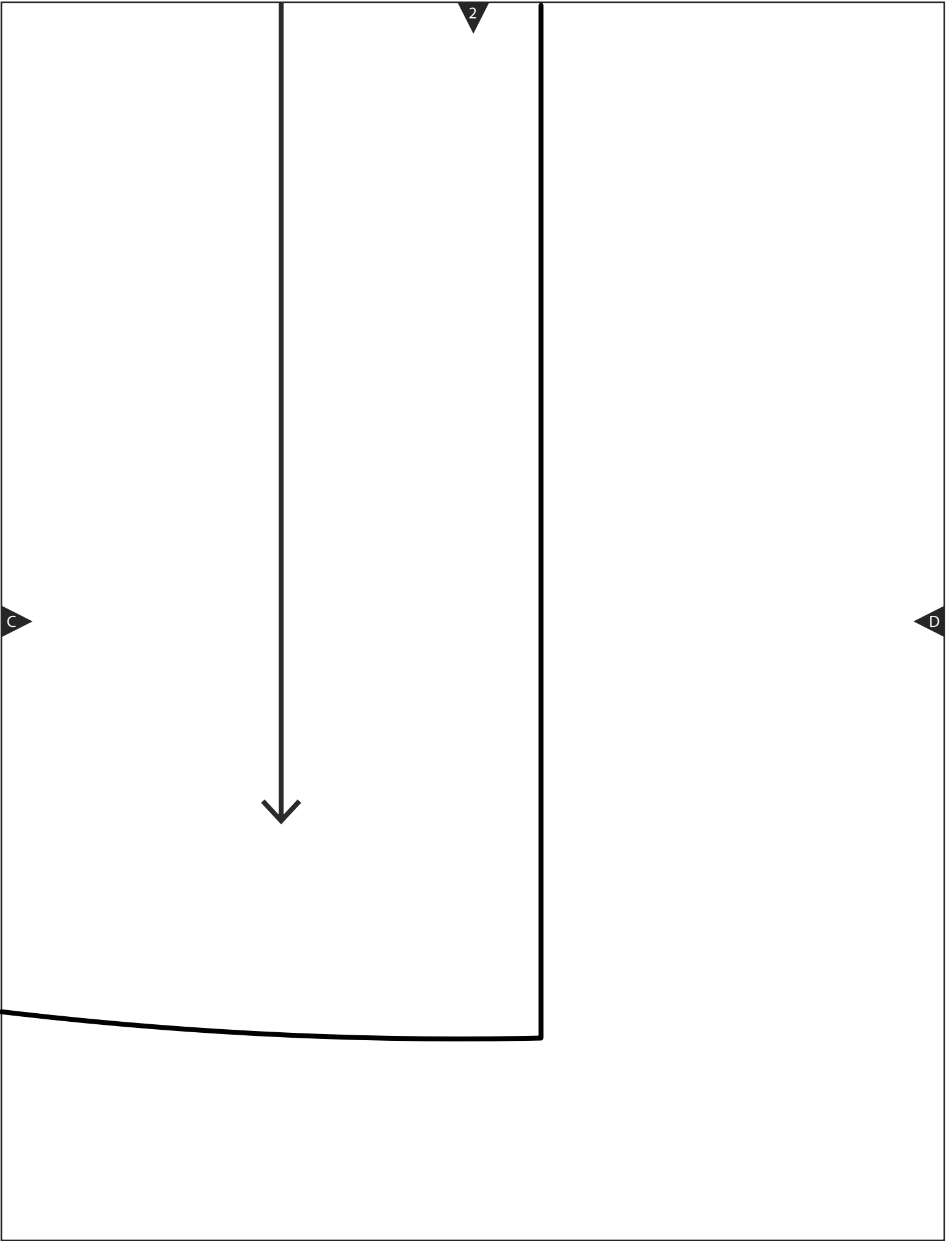


2

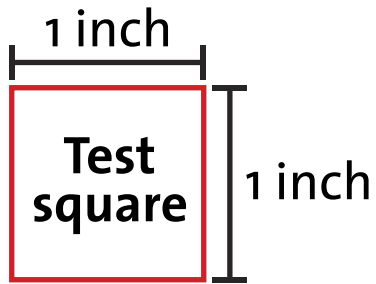
A





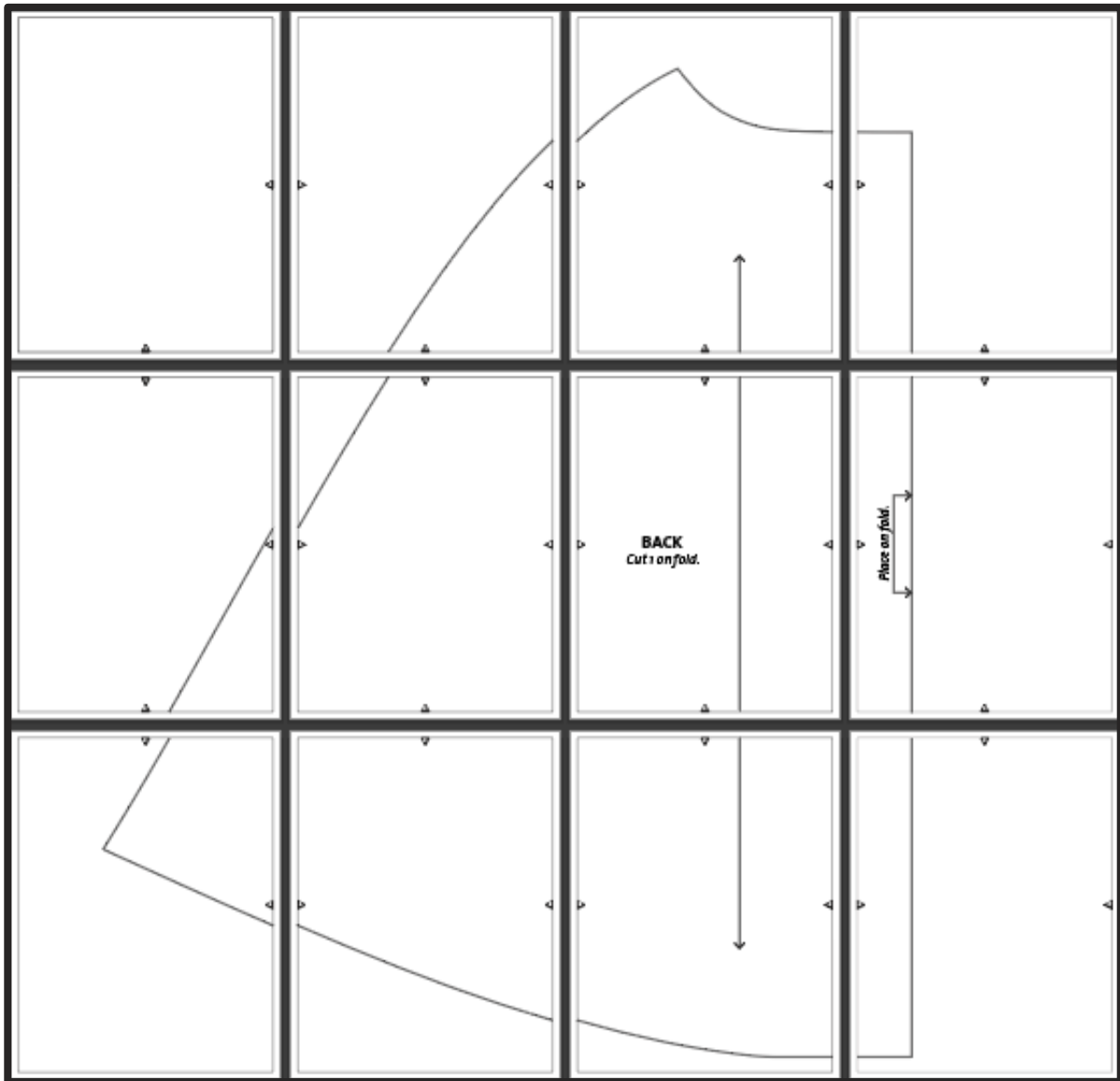


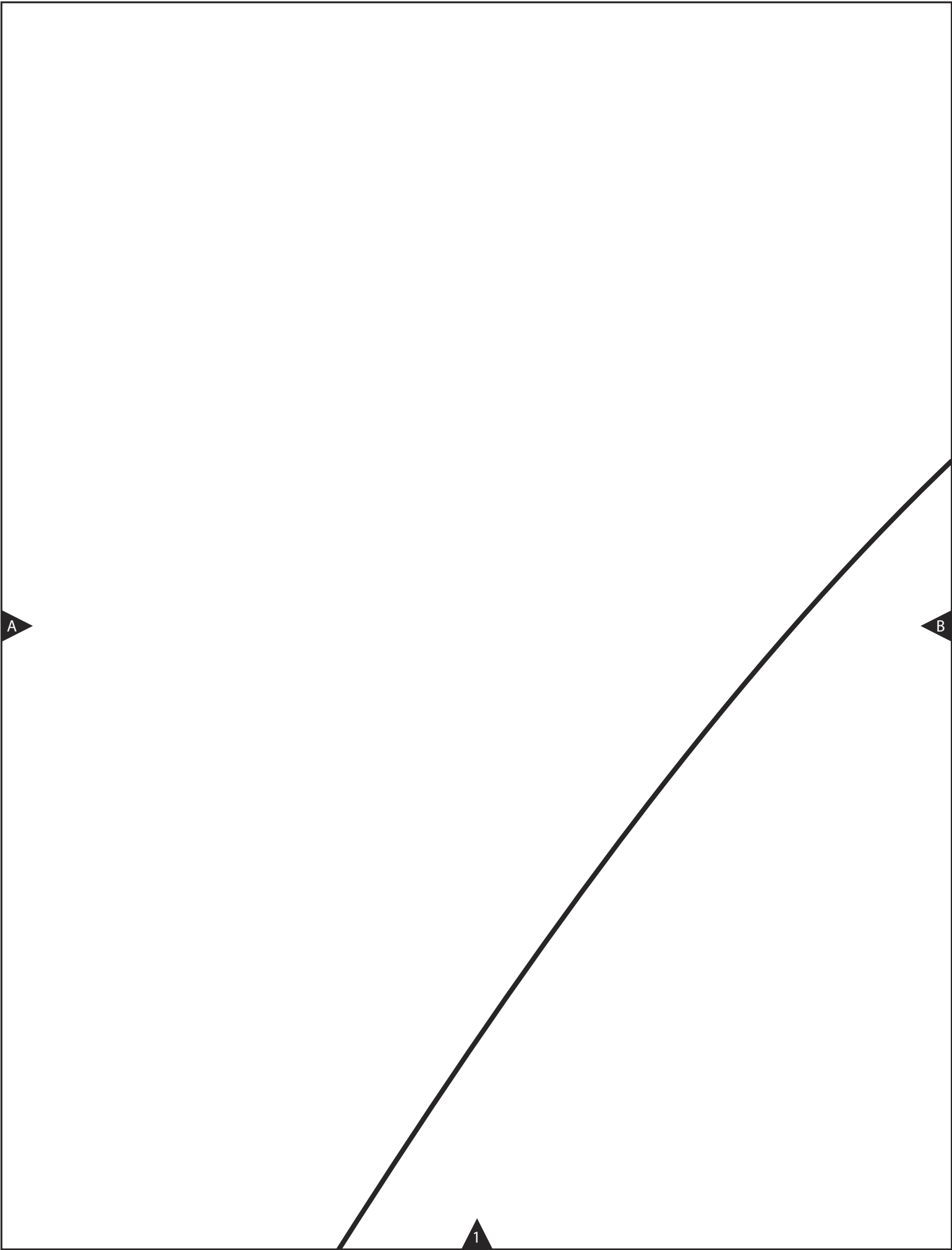
threads

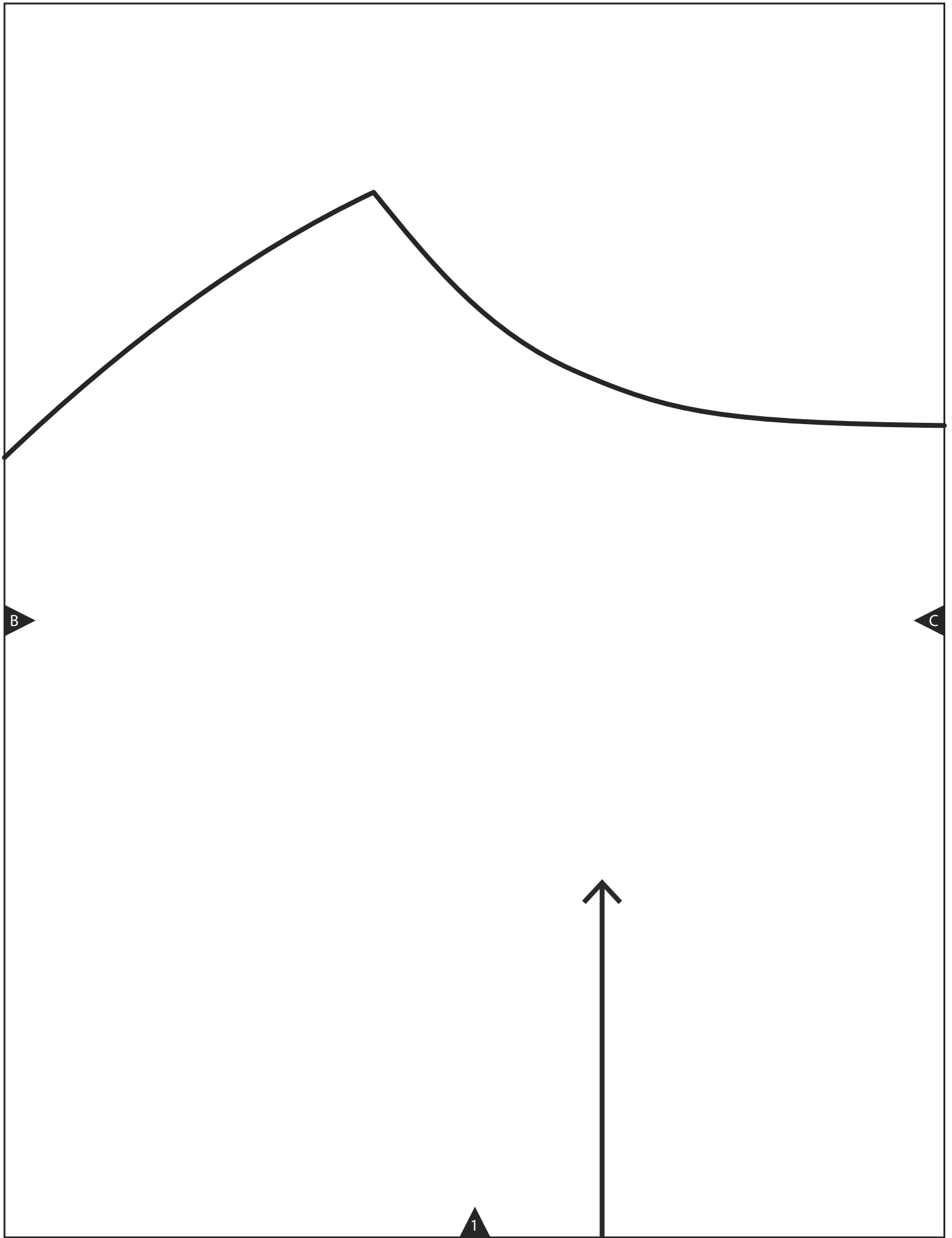


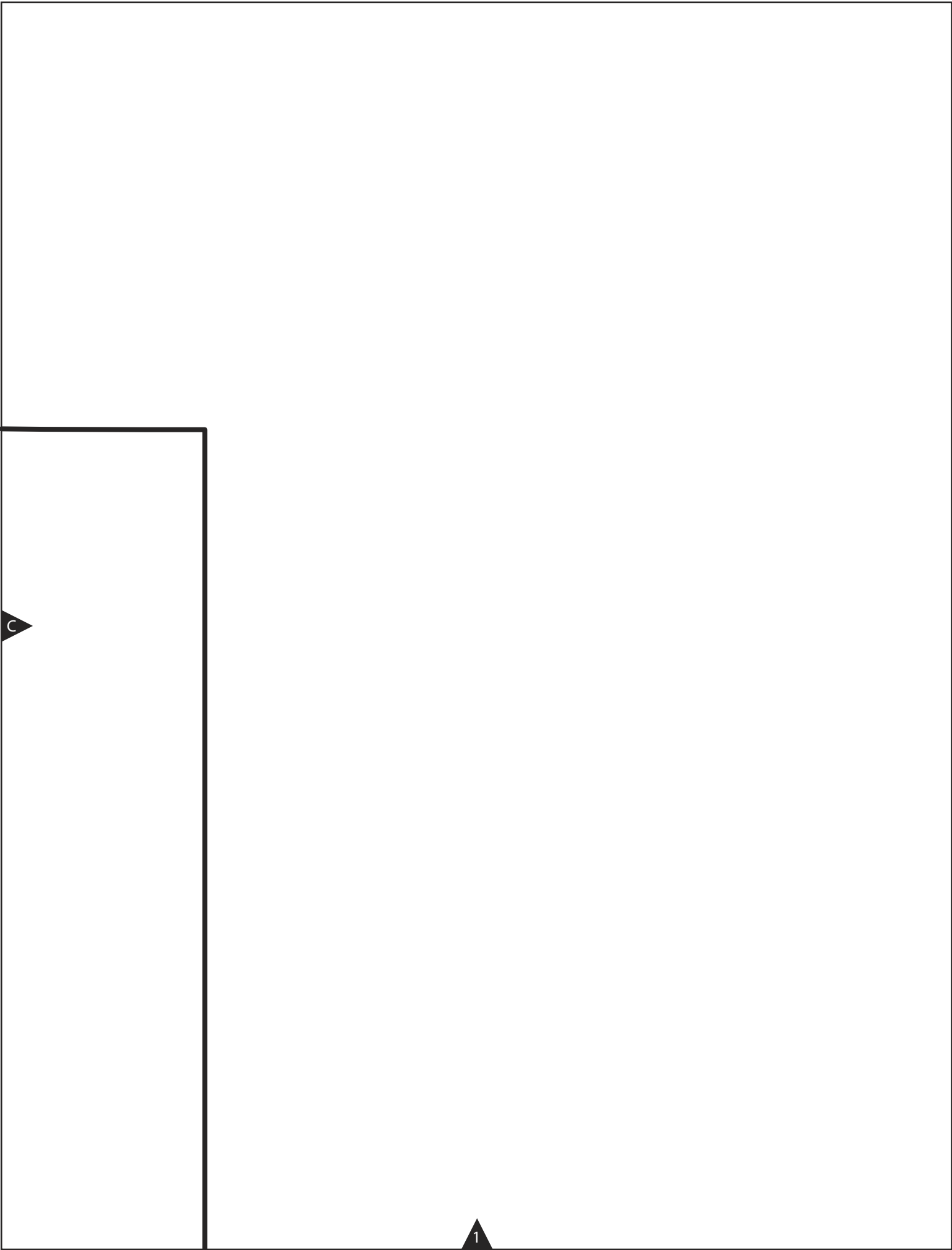
Parisian Cape Pattern

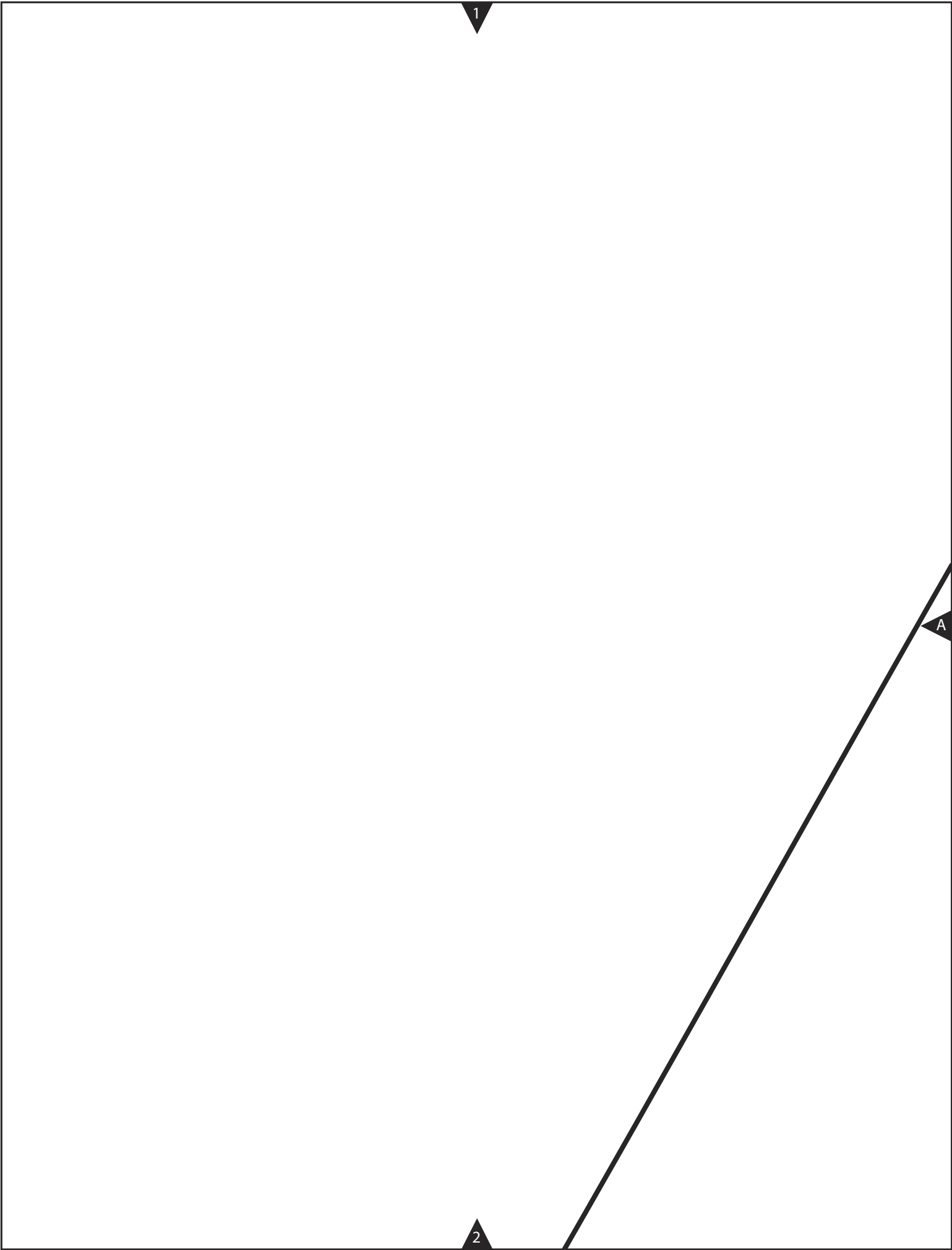
5/8-inch-wide seam allowances included

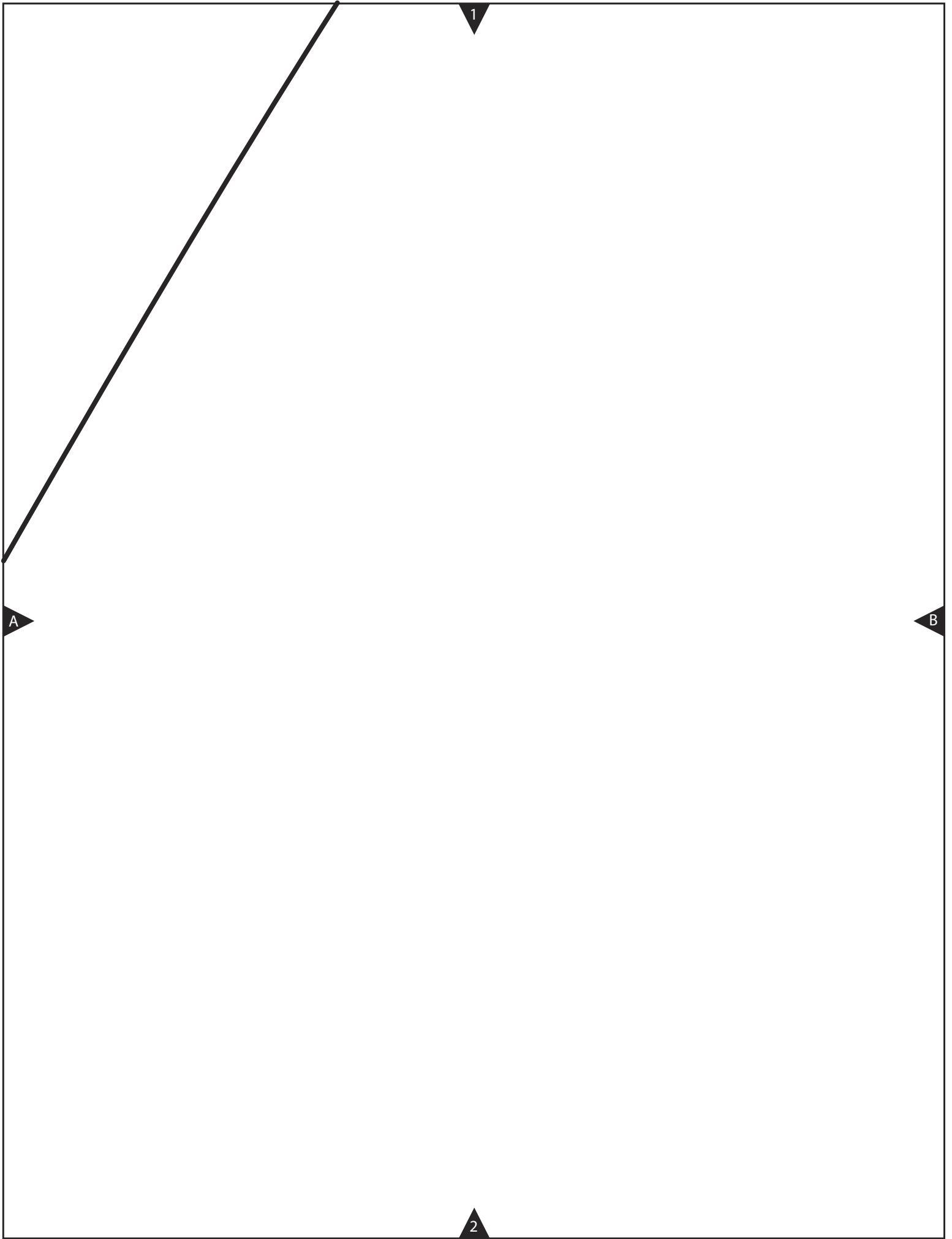












1

B

BACK
Cut 1 on fold.

C

2

Place on fold.

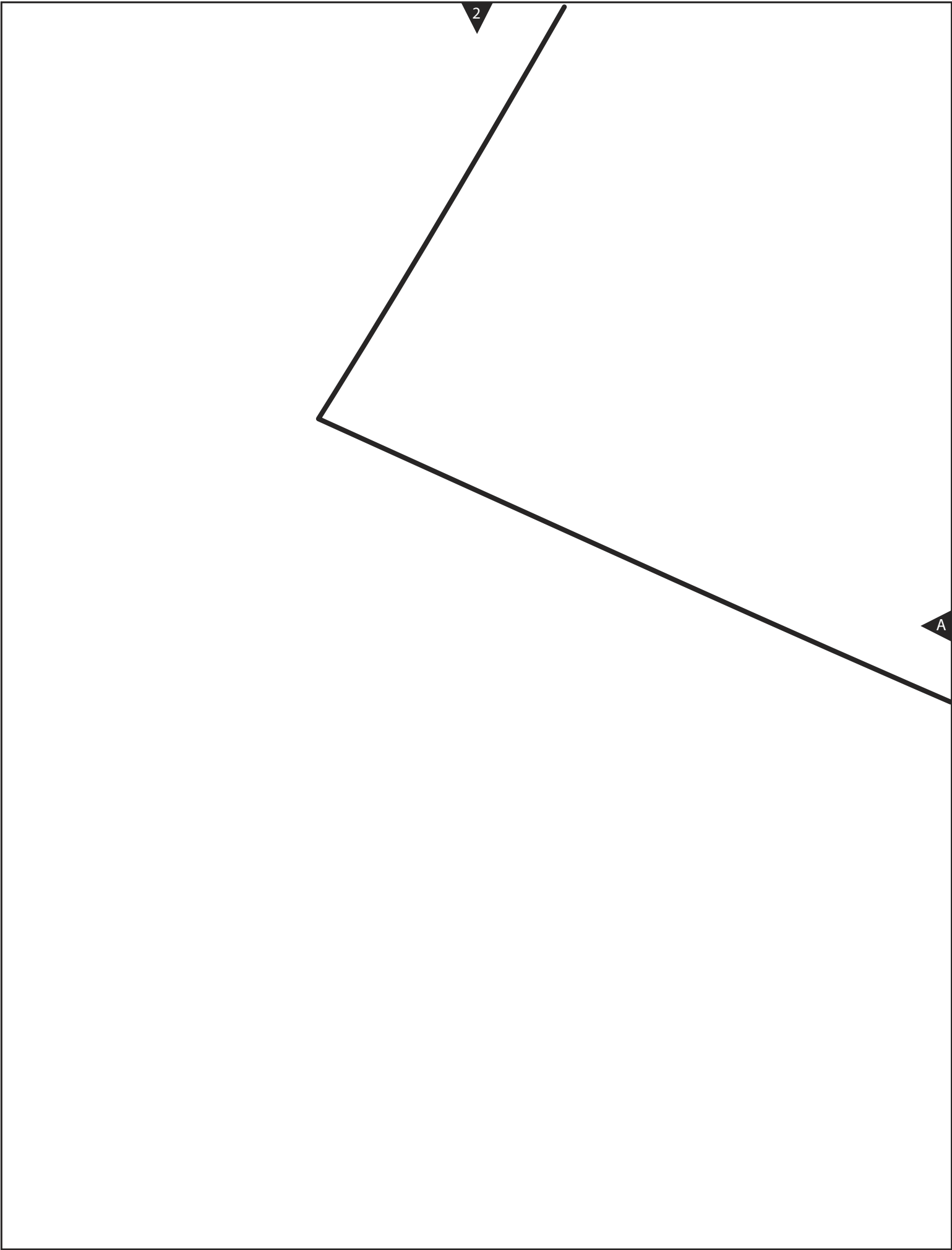


1

2

C

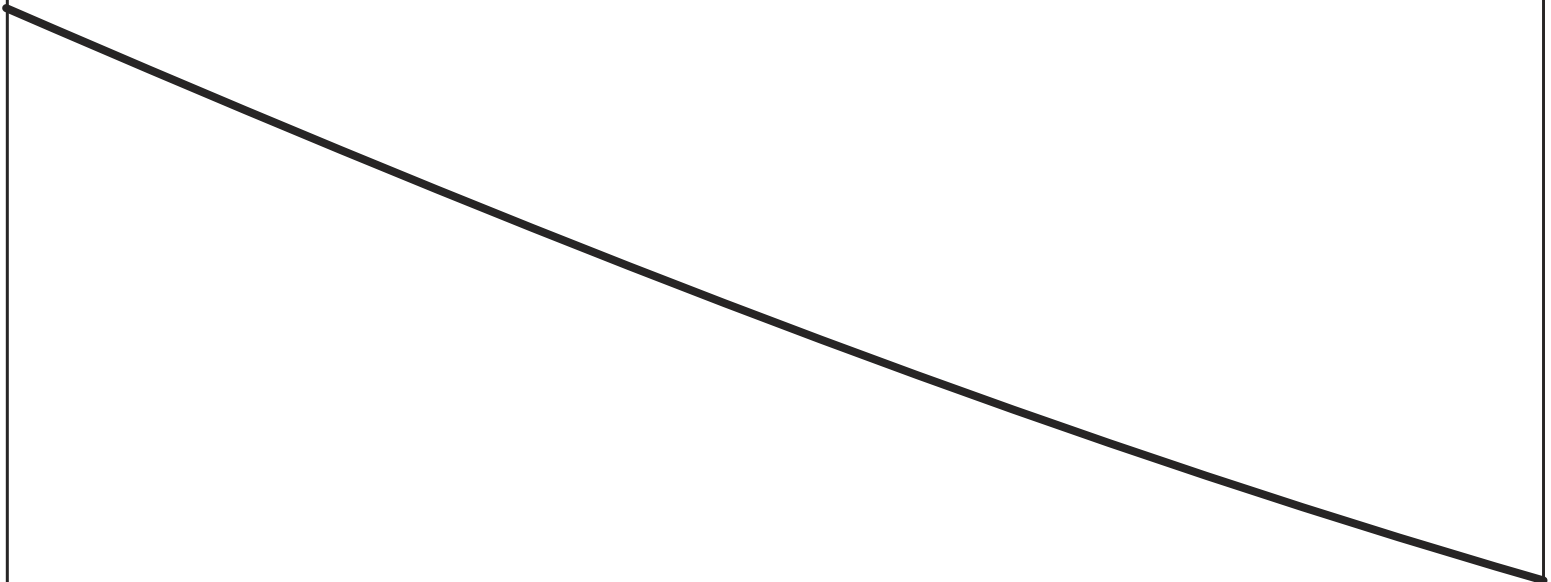
D

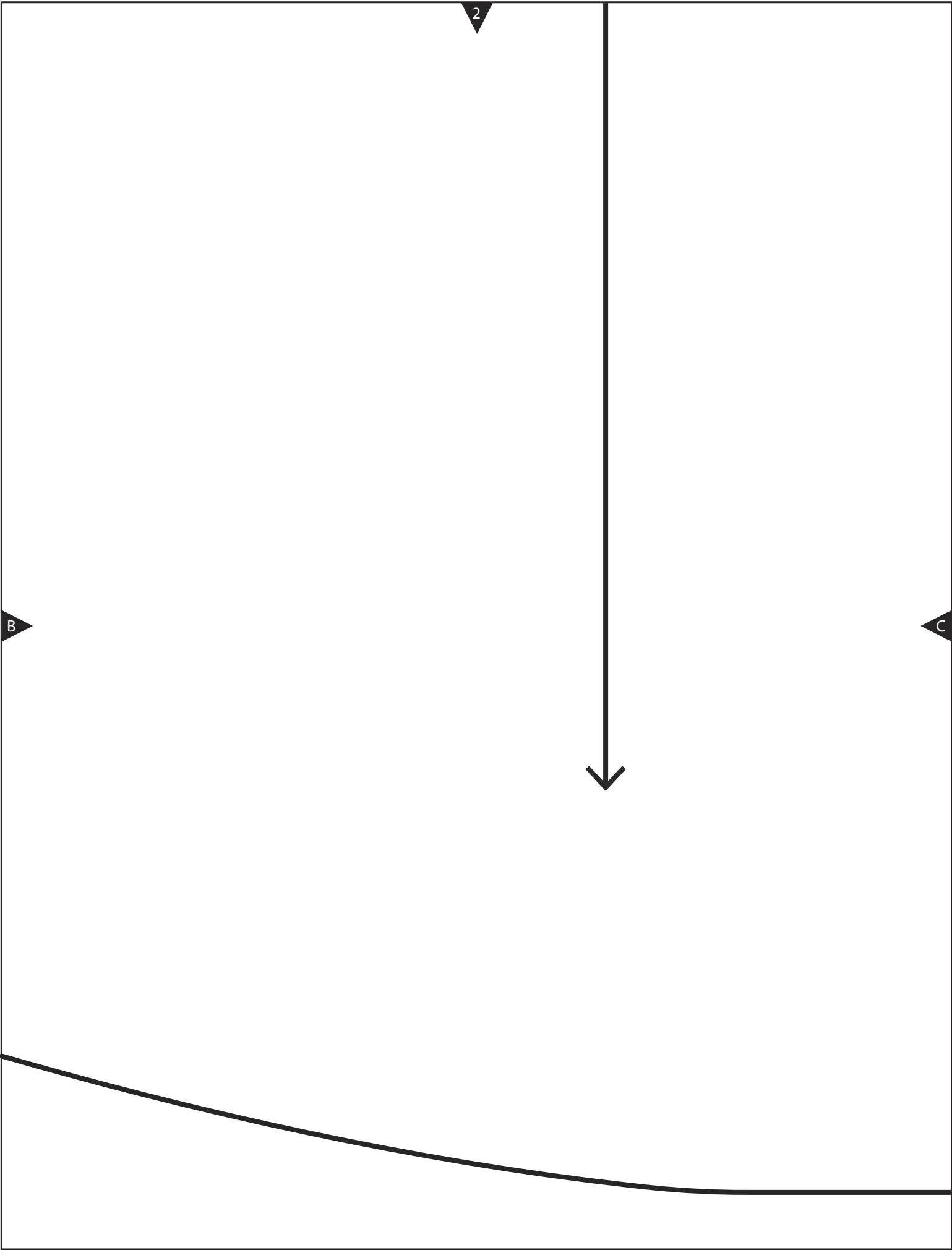


2

A

B





2

C

D